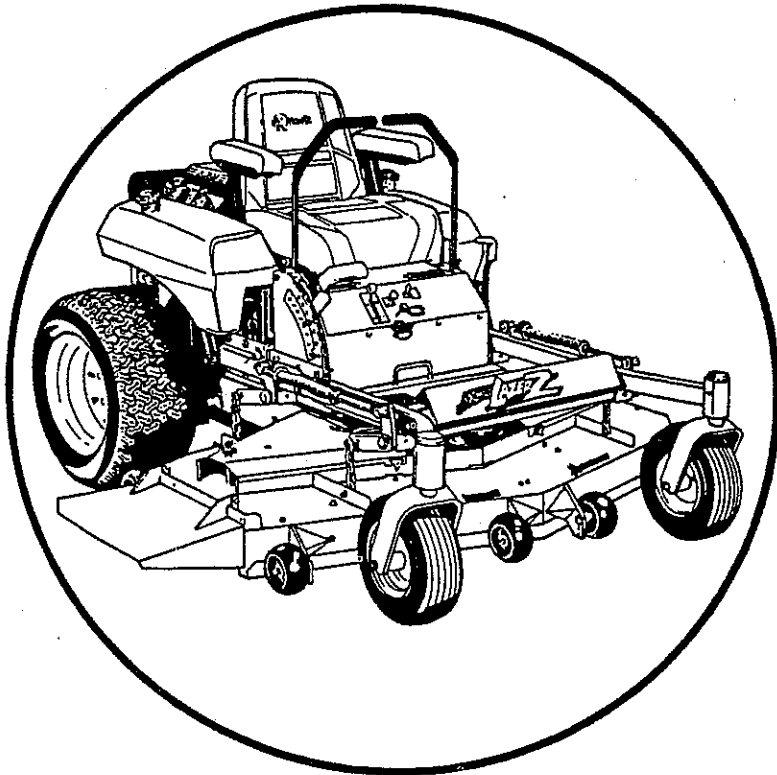




For Serial Nos.  
115,000 and Higher

# Lazer Z



## Parts Manual

CONGRATULATIONS on the purchase of your new Exmark mower. This product has been carefully designed and manufactured to give you a maximum amount of dependability and years of trouble-free operation.

If additional information is needed, or should you require trained mechanic service, contact your authorized Exmark equipment dealer or distributor.

If you need to order replacement parts from your dealer, always give the model number and serial number of your mower as well as the part number, description and quantity of the part needed.

The Serial No. plate is located on the right hand side of the console.

For ease of ordering and reference, we suggest that you record the information requested in the following identification table.

Model No. \_\_\_\_\_

Serial No. \_\_\_\_\_

Date Purchased \_\_\_\_\_

Purchased From \_\_\_\_\_

## TABLE OF CONTENTS

Description	Page
Decals .....	20
Electrical Diagram .....	22
Electrical Group .....	21
Engine Deck Group .....	17, 18, 19
Front Frame Group .....	7, 8
Fuel Group .....	10
Hydraulics Group .....	15, 16
Main Frame Group .....	9
Motion Control Levers .....	13, 14
Park Brake Group .....	11, 12
Safety First .....	1, 2
Service Record .....	23, 24
52" Deck Group .....	3, 4
60" Deck Group .....	5, 6

### SAFETY RECOMMENDATIONS FOR ALL EXMARK MOWER USERS

#### TRAINING

1. Read the instructions carefully. Be familiar with the controls and the proper use of the equipment. Regard the Exmark mower as a piece of power equipment and teach this regard to all who operate this unit.
2. Avoid mowing while people, especially when children or pets, are nearby. Never allow children, teenagers, or people unfamiliar with these instructions to use the mower. Keep in mind that the operator or user is responsible for accidents or hazards occurring to other people or their property.

#### PREPARATION

1. The use of personal protective equipment, such as (but not limited to) protection for the eyes, ears, feet and head is recommended.
2. While mowing, always wear substantial footwear and long trousers. **Do Not** operate the equipment when barefoot, wearing baggy clothing or trousers with loose strings, or while wearing open sandals.
3. Thoroughly inspect the area where the equipment will be used. Remove all stones, sticks, wire, bones and other foreign objects which can result in personal injury.

#### OPERATION



#### WARNING

- Failure to follow safety instructions and cautious operating practices can result in serious injury.
1. This mower was designed for one operator only. Keep all others away from mower during operation.
  2. Give complete undivided attention to the job at hand.
  3. Mow only in daylight or good artificial light.



#### DANGER

- **Do Not** operate the engine in a confined area where dangerous carbon monoxide fumes can collect.
4. When feasible, avoid operating the equipment in wet grass.
  5. Mow *up and down* slopes. Use extreme caution when mowing and/or turning on slopes, and when mowing up slopes (*tractor could tip backward*). **Do Not** mow excessively steep slopes.
  6. Use extreme caution when backing up.
  7. Stop the blades when transporting the mower across any surface other than grass, and when transporting the mower to and from the area to be mowed.
  8. **Never** operate the mower with damaged guards, shields, or without operating safety devices in place. **Do Not** mow without grass deflector or entire grass collection system in place and in proper working condition.
  9. **Do Not** change the governor settings or overspeed the engine. Operating an engine at excessive speed may increase the hazard of personal injury.
  10. Fill the gas tank with the recommended fuel specified by the engine manufacturer.



#### DANGER

- Fuel is *highly flammable*. **Never** remove the cap of the gas tank while engine is running or when engine is hot. Add fuel *before* starting the engine.
  - Refuel outdoors or in a well ventilated area. **Do Not** smoke when refueling or operating the equipment.
  - If fuel is spilled, **Do Not** attempt to start the engine. Move away from the spill and avoid creating any source of ignition or sparks until fuel vapors have dissipated.
11. Before starting engine: place transmission in neutral (move levers outward), set parking brake and disengage the blade clutches. Follow engine manufacturer recommendations for starting engine.
  12. Start the engine with feet well away from the blades.
  13. Keep hands, feet and clothing away from rotating parts while the mower is being operated.



#### CAUTION

- The engine can become very hot. Always allow the engine to cool before servicing or making any repairs near the engine area.
14. Stop the engine:
    - Before refueling.
    - Before removing grasscatcher.
  14. Stop the engine and remove ignition key:

- Before checking, adjusting, or clearing blockages.
- After striking a foreign object to inspect mower for damage. Make any necessary repairs before restarting and operating the mower.
- Whenever you leave the mower.

### WARNING

- **Do Not rely solely on mechanical or hydraulic jacks for support. Properly support the deck or mower using adequate jack stands or equivalent support.**
15. Return the throttle control to the idle position for 30 seconds for engine cool down before stopping the engine.
  16. The fuel system is provided with a shut-off valve. The fuel shut-off valve is used when transporting the mower to and from the job site and when the mower will be stored and not in use for a few days.
  17. If jump starting is required, connect positive (+) power cable from booster battery to the positive (+) terminal post on starter solenoid switch (this post has the positive battery cable hooked to it). Connect the ground (-) cable from booster battery to any engine deck ground (preferably the engine block).
  18. Disconnect cables in the reverse order after engine has started.

## MAINTENANCE AND STORAGE

### CAUTION

- Although hazard control and accident prevention are partially dependent upon the design and configuration of the equipment, these factors are also dependent upon the awareness, concern, prudence and proper training of the personnel involved in the operation, transport, storage and maintenance of the equipment.
  - It is essential that all operator safety guards and mechanisms be connected and in proper operating condition prior to mowing.
1. Follow the engine manufacturer's recommendations as detailed in the engine manual, for maintenance and service on the engine.
  2. Keep engine and engine area free of grass, leaves, excessive grease and oil, and other debris which can accumulate in these areas. Some of these materials can become combustible and result in a fire.
  3. Maximum mowing results and safety can be achieved if the mower is properly maintained and operated correctly.
  4. Keep all guards, shields and other safety devices *in place* and in safe working condition.

5. Check all bolts and hydraulic fittings frequently to maintain proper tightness.
6. If carburetor adjustment is necessary, disengage the blade and wheel drive, stand to one side keeping hands and feet away from the mower deck, make appropriate adjustments.
7. Check for worn or deteriorating components and belts which could create a hazard. Replace or repair as necessary.
8. All replacement parts must be equivalent or the same as the parts supplied as original equipment.

### DANGER

- **Fuel is highly flammable. Do Not store fuel in an enclosed area where heating appliance or open flame is present. Store fuel in a container designed specifically for that purpose.**
9. Store fuel in a cool dry place. Keep fuel and mower in locked storage to prevent children from playing or tampering with them.

### CAUTION

- Hydraulic fluid escaping under pressure may have sufficient force to penetrate the skin and cause serious injury. If foreign fluid is injected into the skin, it must be surgically removed within a few hours by a doctor familiar with this form of injury or gangrene may occur.
- Use paper or cardboard to check for leaks. **NEVER** use your hands.
- Safely relieve all pressure in the system before disconnecting the lines or before performing work on the hydraulic system.

## SAFETY SIGNS

1. Familiarize yourself with the instruction and safety labels. They are critical to the safe operation of your Exmark commercial mower. Remove all grease, dirt and debris from safety signs. Safety signs must be replaced if they are missing or illegible.
2. Safety signs may be affixed by peeling off the backing to expose the adhesive surface. Apply only to a clean dry surface. Smooth to remove air bubbles.
3. When new components are installed, insure that current safety signs are affixed to the replaced component. New safety signs may be obtained from your authorized Exmark dealer or distributor, or from Exmark Mfg. Co. Inc.

## 52" DECK GROUP

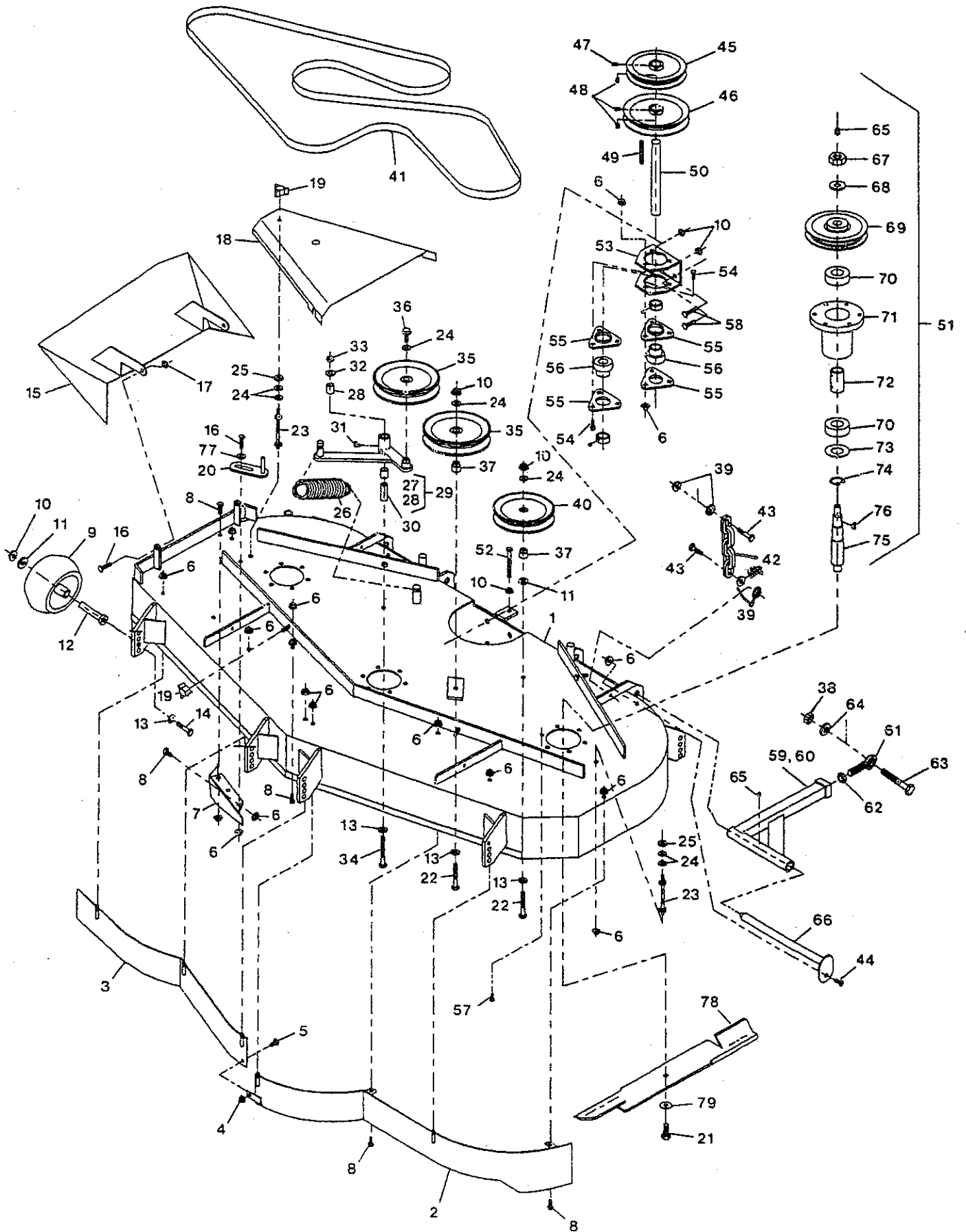
Ref. No.	Part No.	Description	Qty. Req'd.	Ref. No.	Part No.	Description	Qty. Req'd.
1	632400	Deck wldmt, 52".....	1	42	633447	Chain.....	4
2	632375	Baffle wldmt, Lh 52".....	1	43	800811	Screw, 7/16-14 x 1-1/2.....	8
3	632377	Baffle wldmt, Rh 52".....	1	44	800271	Screw, 5/16-18 x 3/4.....	2
4	809012	Nut, 1/4-20 whizlock.....	1	45+	403087	Sheave, blade drive 6.75 OD..	1
5	807512	Bolt, 1/4-20 x 3/4 carriage.....	1	46+	633010	Pulley, split sheave 6.30 OD..	1
6	809001	Nut, 5/16-18 whizloc.....	26	470	803046	Setscrew, 5/16-18 x 1sqhdcp..	1
7	602913	Baffle wldmt, discharge.....	1	480	803022	Setscrew, 5/16-18x5/8sqhdcp	3
8	800270	Screw, 5/16-18 x 5/8.....	10	49	807264	Key, 1/4 sq x 2 5/8.....	1
9	603299	Roller, antiscalp.....	6	50	633012	Jackshaft, deck drive.....	1
10	809007	Nut, 3/8-16 whizlock.....	14	51	634242	Cutter housing complete.....	3
11	373034	Washer, pivot.....	7	52	800300	Screw, 3/8-16 x 3.....	1
12	603602	Bushing, roller.....	6	53	633014	Bracket, jackshaft.....	1
13	303327	Washer, 3/8 disc spring.....	9	54	807503	Bolt, 5/16-18 x 3/4 Carr.....	6
14	800807	Screw, 3/8-16 x 4 gr8.....	6	55	513013	Housing, flange.....	4
15	602571	Chute, discharge 52".....	1	56	513012	Bearing w/lock collar & ss.....	2
16	800273	Screw, 5/16-18 x 1.....	3	57	809035	Bolt, taptite 3/8-16 x 1.....	18
17	804256	Nut, 5/16-18 nyloc.....	2	58	807507	Bolt, 3/8-16 x 1 carr.....	4
18	633357	Shield, belt 52".....	2	59	632197	Strut wldmt, deck Lh.....	1
19	323385	Knob, belt shield.....	6	60	632288	Strut wldmt, deck Rh.....	1
20	322110	Belt guide wldmt.....	1	61	633029	Spherical rod end.....	2
21	800531	Screw, 1/2-20 x 1.....	3	62	804756	Nut, 5/8-18 jam.....	2
22	800297	Screw, 3/8-16 x 2 1/4.....	2	63	800343	Screw, 5/8-11 x 5.....	2
23	303537	Stud, belt shield.....	2	64	805010	Washer, 5/8 reg.spring.....	2
24	805258	Washer -5/16 std flat.....	7	65	811006	Zerk, 1/4-28 straight.....	5
25	323417	Washer, rubber.....	2	66	632199	Pin wldmt, deck strut.....	2
26	633151	Spring, extension.....	1	67	804510	Nut, 5/8-18 hex.....	3
27	632119	Arm wldmt, deck idler.....	1	68	513208	Washer, disc spring.....	3
28	513034	Bearing, pivot.....	2	69	633011	Pulley, cast iron 6.30 O.D.....	3
29	634244	Arm wldmt/brg sub-assy.....	1	70	303057	Bearing.....	6
30	603044	Bushing, idler pivot.....	1	71	513186	Housing, bearing.....	3
31	811008	Zerk, 1/4-20 90deg.....	1	72	513188	Spacer, bearing.....	3
32	805260	Washer, 3/8 std flat.....	1	73	513193	Seal, mech.dust.....	3
33	804257	Nut, 3/8-16 nylock.....	1	74	808506	Snap Ring.....	3
34	800299	Screw, 3/8-16 x 2 3/4.....	1	75	603031	Spindle.....	3
35	633109	Idler pulley 6.00 dia flat.....	2	76	807006	Key, # 61 Woodruff.....	3
36	803016	Bolt, 3/8-16 x 1 whizlock.....	1	77	303334	Washer, 5/16 disc spring.....	1
37	633456	Bushing, Idler.....	2	78	603637	Blade, 18.0" std.....	3
38	804522	Nut, 5/8-11 hex.....	2		613101	Blade, notched air foil.....	3
39	809073	Nut, 7/16-14 whizlock.....	16		603844	Blade, low lift.....	3
40	603805	Idler pulley 5.06 O.D V.....	1	+	603873	Blade, mulching.....	3
41	633366	Belt, blade drive 52" Deck.....	1	79	513435	Washer, disc spring.....	3

+ Requires installation of Micro-Mulch accessory for proper mulching.

+ Use antiseize on bore of pulleys.

0 Use Pro-lock Nut Type (P/N 840022 .5 ml. tube) on setscrews.

# 52" DECK GROUP

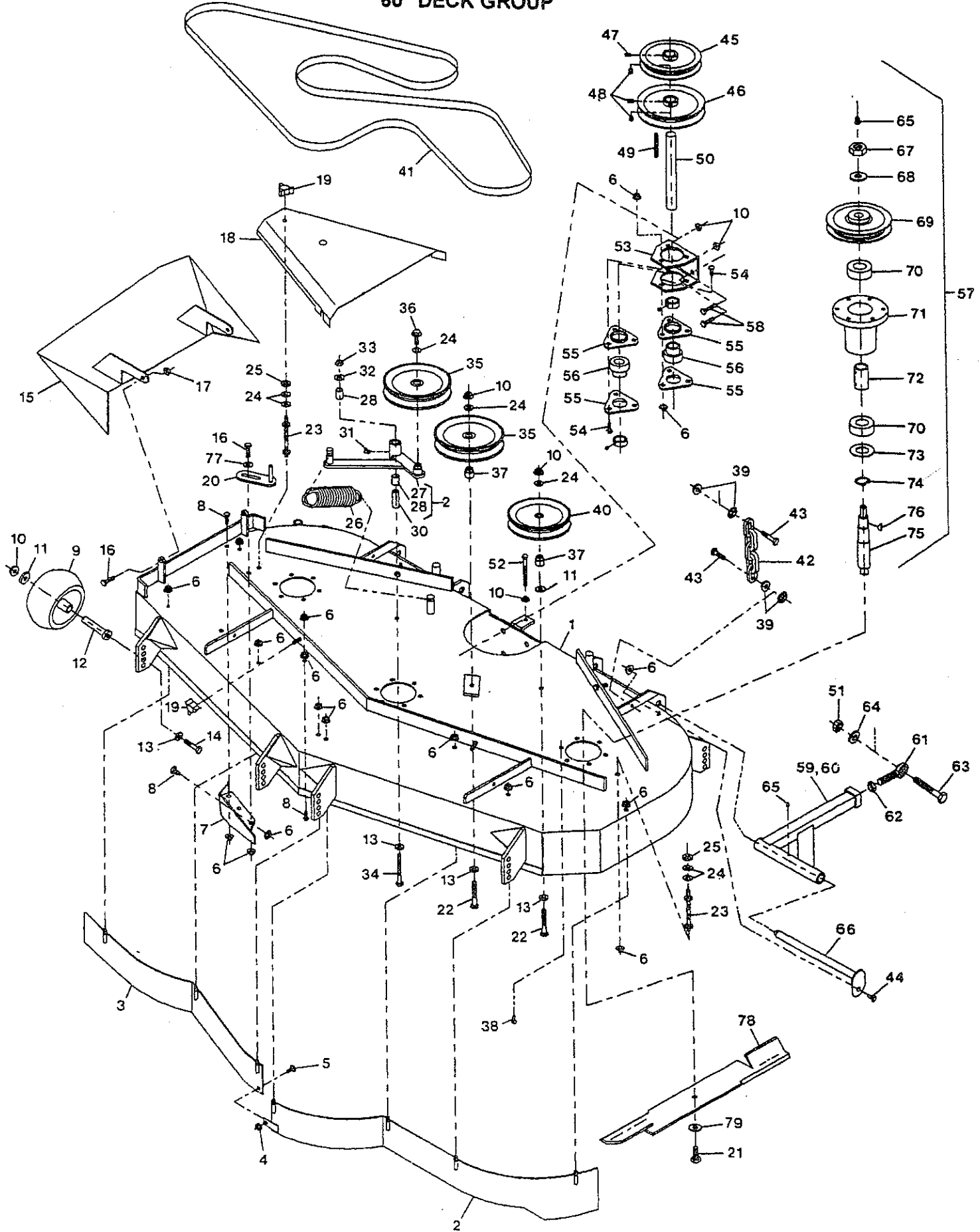


## 60" DECK GROUP

Ref. No.	Part No.	Description	Qty. Req'd.	Ref. No.	Part No.	Description	Qty. Req'd.
1	632450	Deck widmt, 60	1	42	633447	Chain	4
2	632237	Baffle widmt, Lh 60"	1	43	800811	Screw, 7/16-14 x 1-1/2	8
3	632235	Baffle widmt, Rh 60"	1	44	800271	Screw, 5/16-18 x 3/4	2
4	809012	Nut, 1/4-20 whizlock	1	45+	303498	Sheave, blade drive 6.13 OD	1
5	807512	Bolt, 1/4-20 x 3/4 carriage	1	46+	633010	Pulley, split sheave 6.30 OD	1
6	809001	Nut, 5/16-18 whizlock	26	470	803046	Setscrew, 5/16-18 x 1sqhdcp	1
7	602913	Baffle widmt, discharge	1	480	803022	Setscrew, 5/16-18x5/8sqhdcp	3
8	800270	Screw, 5/16-18 x 5/8	8	49	807264	Key, 1/4 sq x 2 5/8	1
9	603299	Roller, antiscalp	6	50	633012	Jackshaft, deck drive	1
10	809007	Nut, 3/8-16 whizlock	14	51	804522	Nut, 5/8-11 hex	2
11	373034	Washer, pivot	7	52	800300	Screw, 3/8-16 x 3	1
12	603602	Bushing, roller	6	53	633014	Bracket, jackshaft	1
13	303327	Washer, 3/8 disc spring	9	54	807503	Bolt, 5/16-18 x 3/4 Carr	6
14	800807	Screw, 3/8-16 x 4 gr8	6	55	513013	Housing, flange	4
15	542606	Chute, discharge 60"	1	56	513012	Bearing w/lock collar & ss	2
16	800273	Screw, 5/16-18 x 1	3	57	634242	Cutter housing complete	3
17	804256	Nut, 5/16-18 nylock	2	58	807507	Bolt, 3/8-16 x 1 carr	4
18	633084	Shield, belt 60"	2	59	632197	Strut widmt, deck Lh	1
19	323385	Knob, belt shield	6	60	632288	Strut widmt, deck Rh	1
20	322110	Belt guide widmt	1	61	633029	Spherical rod end	2
21	800531	Screw, 1/2-20 x 1	3	62	804756	Nut, 5/8-18 jam	2
22	800297	Screw, 3/8-16 x 2 1/4	2	63	800343	Screw, 5/8-11 x 5	2
23	303537	Stud, belt shield	2	64	805010	Washer, 5/8 reg.spring	2
24	805258	Washer -5/16 std flat	7	65	811006	Zerk, 1/4-28 straight	5
25	323417	Washer, rubber	2	66	632199	Pin widmt, deck strut	2
26	633151	Spring, extension	1	67	804510	Nut, 5/8-18 hex	3
27	632119	Arm widmt, deck idler	1	68	513208	Washer, disc spring	3
28	513034	Bearing, pivot	2	69	633011	Pulley, cast iron 6.30 O.D.	3
29	634244	Arm widmt/brg sub-assy	1	70	303057	Bearing	6
30	603044	Bushing, idler pivot	1	71	513186	Housing, bearing	3
31	811008	Zerk, 1/4-20 90deg	1	72	513188	Spacer, bearing	3
32	805260	Washer, 3/8 std flat	1	73	513193	Seal, mech.dust	3
33	804257	Nut, 3/8-16 nylock	1	74	808506	Snap Ring	3
34	800299	Screw, 3/8-16 x 2 3/4	1	75	603031	Spindle	3
35	633109	Idler pulley 6.00 dia flat	2	76	807006	Key, # 61 Woodruff	3
36	803016	Bolt, 3/8-16 x 1 whizlock	1	77	303334	Washer, 5/16 disc spring	1
37	633456	Bushing, Idler	2	78	603283	Blade, 20.5" std	3
38	809035	Bolt, taptite 3/8-16 x 1	18		613072	Blade, notched air foil	3
39	809073	Nut, 7/16-14 whizlock	16		603661	Blade, low lift	3
40	603805	Idler pulley 5.06 O.D. V	1	+	603874	Blade, mulching	3
41	633127	Belt, blade drive 60" deck	1	79	513435	Washer, disc spring	3

- ⊕ Requires installation of Micro-Mulch accessory for proper mulching.
- ⊕ Use antiseize on bore of pulleys.
- ◊ Use Pro-lock Nut Type (P/N 840022 .5 ml. tube) on setscrews.

# 60" DECK GROUP

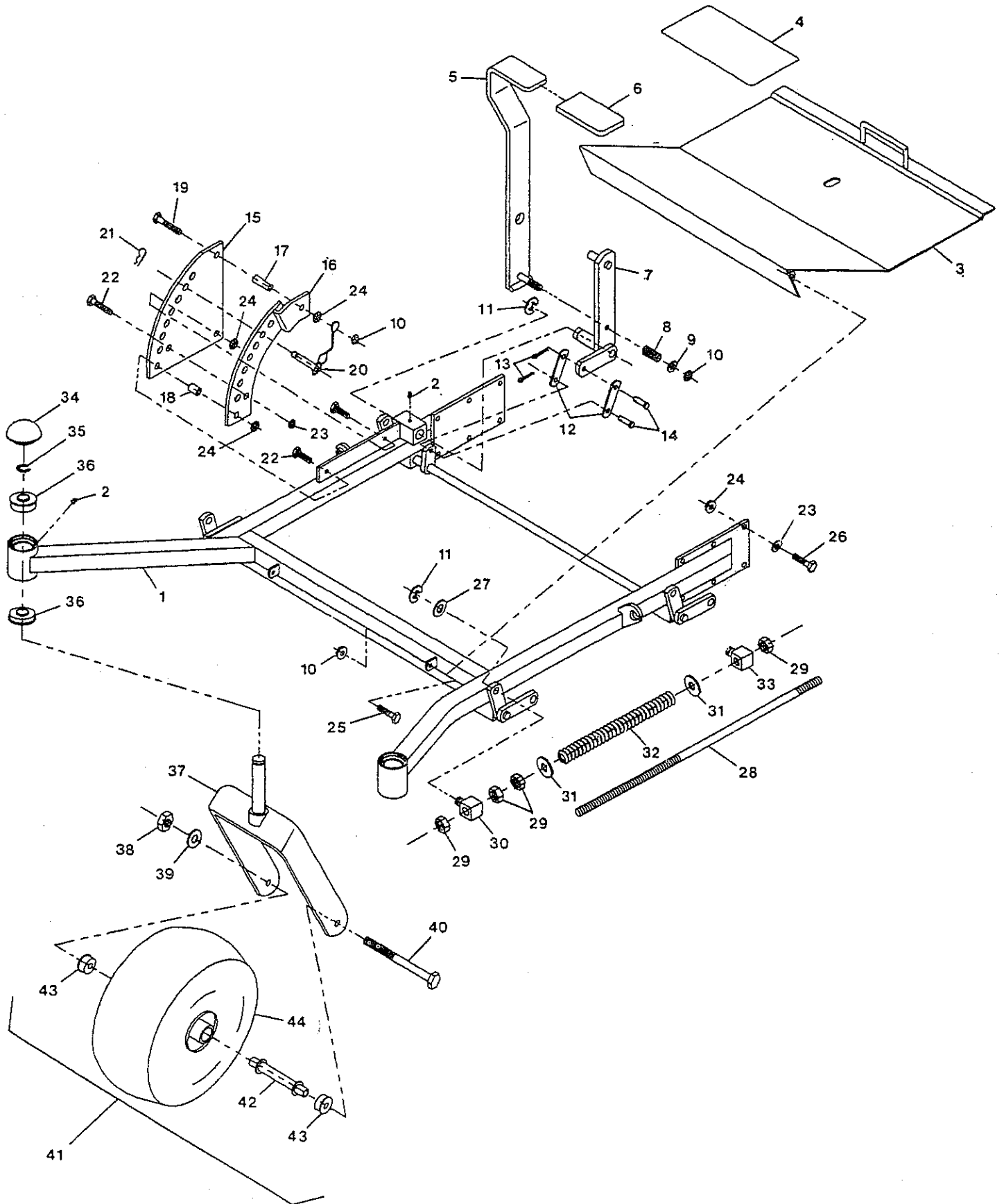


## FRONT FRAME GROUP

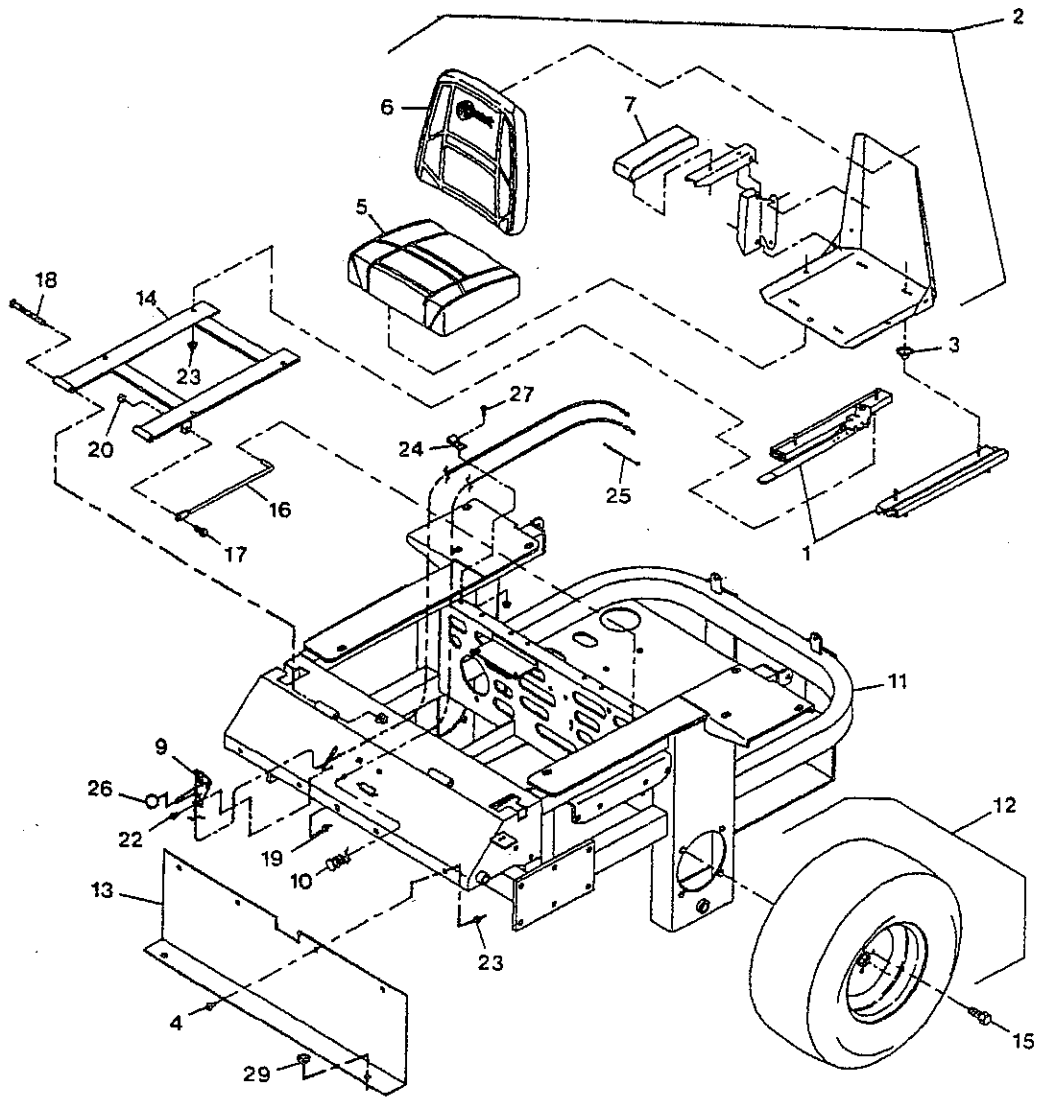
Ref. No.	Part No.	Description	Qty. Req'd.	Ref. No.	Part No.	Description	Qty. Req'd.
1	632433	Frame widmt, front 52".....	1	23	303327	Washer, 3/8 disc spring.....	12
	632422	Frame widmt, front 60".....	1	24	809007	Nut, whizlock 3/8-16 (1).....	15
2	811006	Zerk, 1/4-28 straight.....	7	25	800292	Screw, 3/8-16 x 1.....	3
3	632206	Floorpan widmt.....	1	26	800293	Screw, 3/8-16X1 1/4.....	12
4	373065	Pad, anti skid.....	6	27	805271	Washer, 7/8 SAE flat.....	4
5	632324	Lever widmt, lift.....	1	28	633096	Rod, deck lift.....	2
6	633295	Grip, lift lever.....	1	29	804522	Nut, 5/8-11 regular.....	8
7	632219	Arm widmt, deck lift.....	1	30	633441	Swivel, deck mount.....	2
8	633325	Spring, compression.....	1	31	805268	Washer, 5/8 std flat.....	4
9	805260	Washer, 3/8 std flat.....	1	32	633064	Spring, deck support.....	2
10	804257	Nut, nylock 3/8-16.....	5	33	633443	Swivel, deck mount.....	2
11	808505	E-ring.....	5	34	513649	Cap, grease.....	2
12	633068	Arm, deck lift.....	2	35	808508	Ring, retaining.....	2
13	806761	Cotter pin, 1/8 x 3/4.....	2	36	513104	Bearing, ball.....	4
14	808284	Clevis pin, 3/8 x 1.....	2	37	632006	Caster widmt.....	2
15	633072	Plate, deck lift.....	1	38	804509	Nut, 1/2-13 reg hex.....	2
16	632195	Plate widmt, deck lift.....	1	39	805008	Washer, 1/2 reg spring.....	2
17	633082	Bushing, lift lever.....	1	40	800339	Screw, 1/2-13 x 7 1/2.....	2
18	633080	Bushing, lift lever.....	1	41	632250	Caster wheel assy.....	2
19	800299	Screw, 3/8-16 x 2 3/4.....	1	42	632050	Spacer widmt, wheel.....	2
20	633097	Hitch pin w/lanyard.....	1	43	513009	Wheel bearing.....	4
21	806005	Hairpin cotter (serv. only).....	1	44	633001	Wheel & tire assy.....	2
22	800295	Screw, 3/8-16 x 1 3/4.....	2		633002	Tire, 13 x 5.0-6 4 ply.....	2
					633003	Wheel.....	2



# FRONT FRAME GROUP



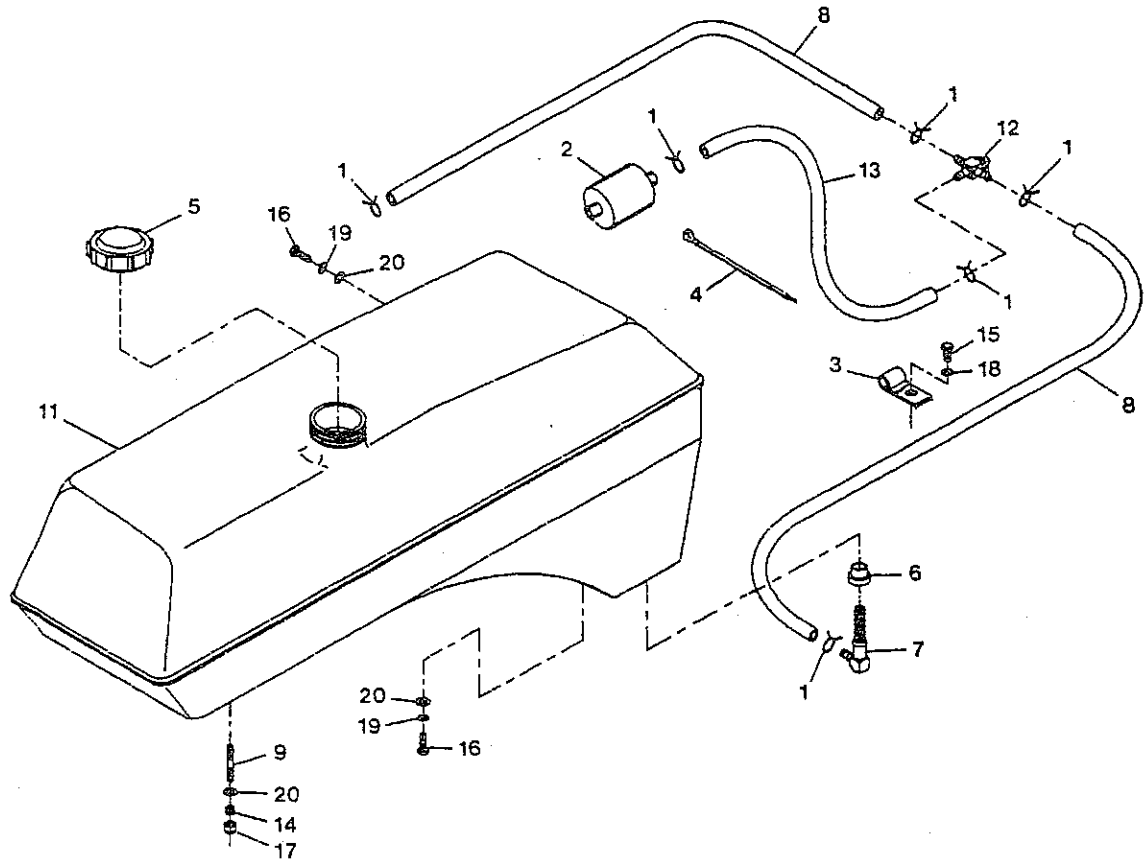
# MAIN FRAME GROUP



Ref. No.	Part No.	Description	Qty. Req'd.	Ref. No.	Part No.	Description	Qty. Req'd.
1	523428	Track, seat (4" adjustable).....	1	15	633273	Bolt, wheel 1/2-20 x 7/8.....	8
2	633461	Seat - Complete W/Armrests..	1	16	633293	Rod, seat hold-up.....	1
3	543401	Spacer, seat track.....	4	17	800273	Screw, 5/16-18 x 1.....	1
4	800271	Screw, 5/16-18 x 3/4.....	4	18	800306	Screw, 3/8-16 x 5.....	2
5	543407	Cushion, seat.....	1	19	804252	Nut, nylock #10-24.....	2
6	543408	Cushion, backrest.....	1	20	804256	Nut, nylock 5/16-18.....	1
7	543409	Cushion, armrest (RH).....	1	21	804257	Nut, nylock 3/8-16.....	2
8*	543411	Cushion armrest (LH).....	1	22	807513	Screw, #10-24 x 1/2.....	2
9	543697	Cable, throttle.....	1	23	809001	Nut, whizlock 5/16-18.....	12
10	603336	Cable, choke.....	1	24	513762	Clip, loom (.50).....	1
11	632414	Frame, engine deck.....	1	25	303335	Plastic tie (lrg).....	1
12	633007	Wheel/tire assembly.....	2	26	513592	Ball, (red) throttle cable.....	1
	633008	Tire, 23 x 10.5 - 12 4 ply.....	1	27	800252	Screw, 1/4-20 x 3/4.....	1
	633009	Wheel.....	1	28	809012	Nut, whizlock 1/4-20.....	1
13	633105	Front, Console.....	1	29	513658	Bumper.....	2
14	633187	Frame, seat mount.....	1				

\* Not Illustrated

# FUEL GROUP



Ref. No.	Part No.	Description	Qty. Req'd.	Ref. No.	Part No.	Description	Qty. Req'd.
1	303077	Clamp, fuel line.....	6	11	633297	Tank, fuel (RH).....	1
2	⊠ Kohler Part No. 2405002	Fuel Filter.....	1	12	633347	Valve, fuel.....	1
3	513762	Clip, loom .50.....	1	13	633348	Fuel line.....	1
4	303335	Plastic tie (large).....	1	14	633349	Spring, fuel tank.....	6
5	513508	Cap, fuel tank.....	2	15	800251	Screw, 1/4-20 x 5/8.....	1
6	513645	Bushing.....	2	16	800271	Screw, 5/16-18 x 3/4.....	4
7	543277	Elbow, strainer.....	2	17	804256	Nut, nylock 5/16-18.....	6
8	543456	Fuel line.....	2	18	805004	Washer, lock 1/4.....	1
9	⬥ 633023	Stud, fuel tank.....	6	19	805005	Washer, lock 5/16.....	4
10*	633296	Tank, fuel (LH).....	1	20	805256	Washer, 1/4 std.....	10

⬥ Use Prolock, Retaining type (Part No. 840023), .5cc tube on stud threads going into the tank.

\* Not Illustrated.

⊠ Refer to Engine Owner's Manual (Fuel Filter Must be 15 Micron or smaller).

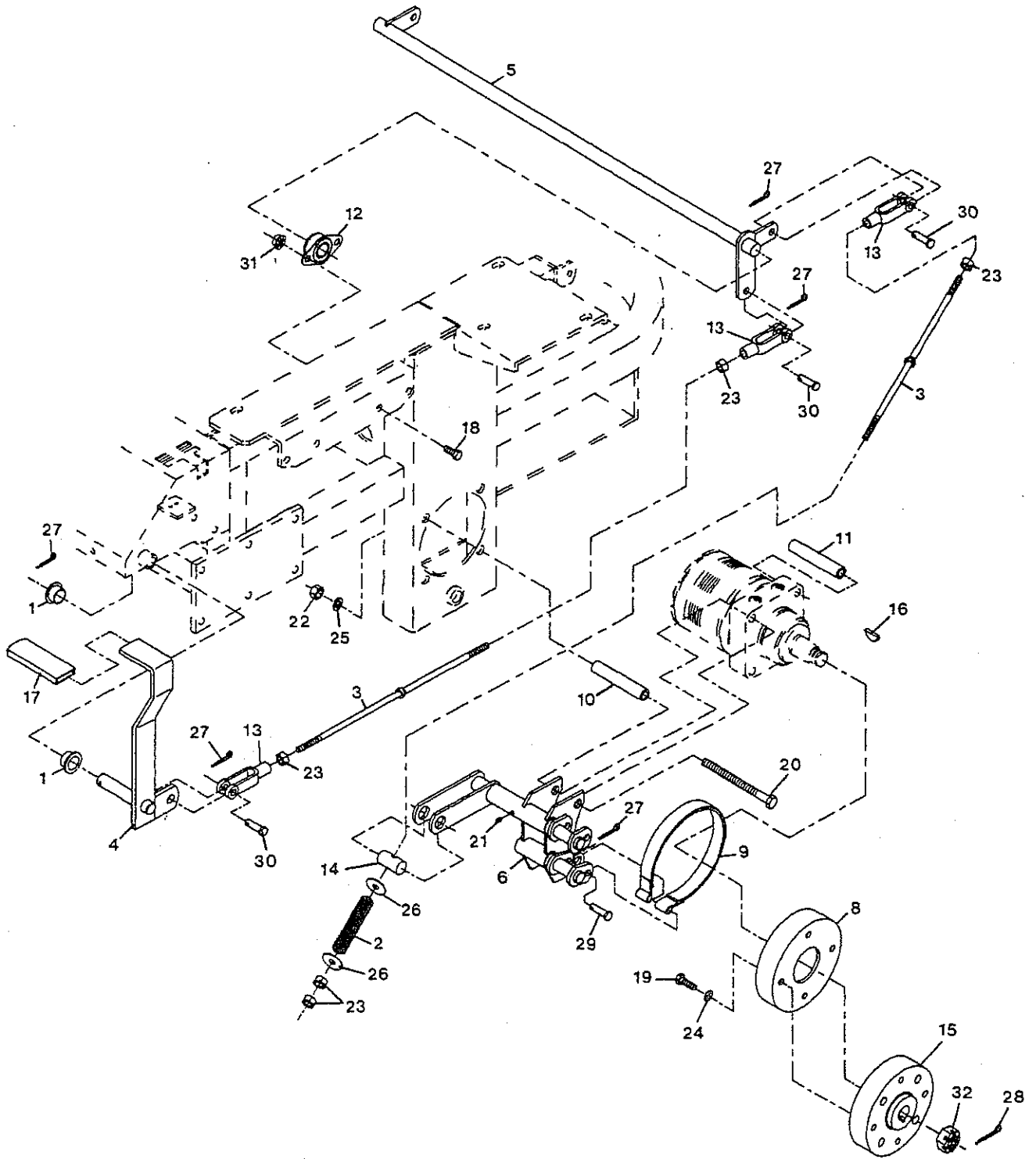
## PARK BRAKE GROUP

Ref. No.	Part No.	Description	Qty. Req'd.	Ref. No.	Part No.	Description	Qty. Req'd.
1	513140	Bushing.....	2	16	807020	Woodruff key, 5/16 x 1.....	1
2	633454	Spring, brake rod.....	2	17	633268	Grip, brake lever.....	1
3	632189	Rod, brake.....	3	18	800290	Screw, 3/8-16 x 3/4.....	4
4	632210	Lever, brake.....	1	19	800292	Screw, 3/8-16 x 1.....	8
5	632217	Shaft, brake.....	1	20	800334	Screw, 1/2-13 x 6 60" Deck....	8
6	632230	Bracket, brake (LH) 60" Deck.	1		800347	Screw, 1/2-13 x 4 52" Deck....	8
	632404	Bracket, brake (LH) 52" Deck.	1	21	811008	Zerk, grease.....	2
7*	632232	Bracket, brake (RH) 60" Deck	1	22	804509	Nut, 1/2-13.....	8
	632406	Bracket, brake (RH) 52" Deck	1	23	804525	Nut, 3/8-24.....	8
8	633057	Drum, brake.....	2	24	805006	Washer, lock 3/8.....	8
9	633058	Band, brake.....	2	25	805008	Washer, lock 1/2.....	8
10	633060	Spacer (short) 60" Deck.....	4	26	805260	Washer, 3/8 std.....	4
	633380	Spacer (short) 52" Deck.....	4	27	806761	Pin, cotter 1/8 x 3/4.....	9
11	633062	Spacer (long) 60" Deck.....	4	28	806800	Pin, cotter 9/64 x 1 1/2.....	2
	633382	Spacer (long) 52" Deck.....	4	29	808283	Pin, clevis 3/8 x 2.....	4
12	633102	Bearing, flange.....	2	30	808285	Pin, clevis 3/8 x 1 1/8.....	4
13	633131	Yoke.....	4	31	809007	Nut, whizlock 3/8-16.....	4
14	633144	Pin, trunion.....	2	32	809036	Nut, castle 1.00-20.....	2
15†	633149	Hub, wheel.....	2				

\* Not Illustrated

† Use anti-sieze on hub bore.

# PARK BRAKE GROUP



## MOTION CONTROL LEVERS

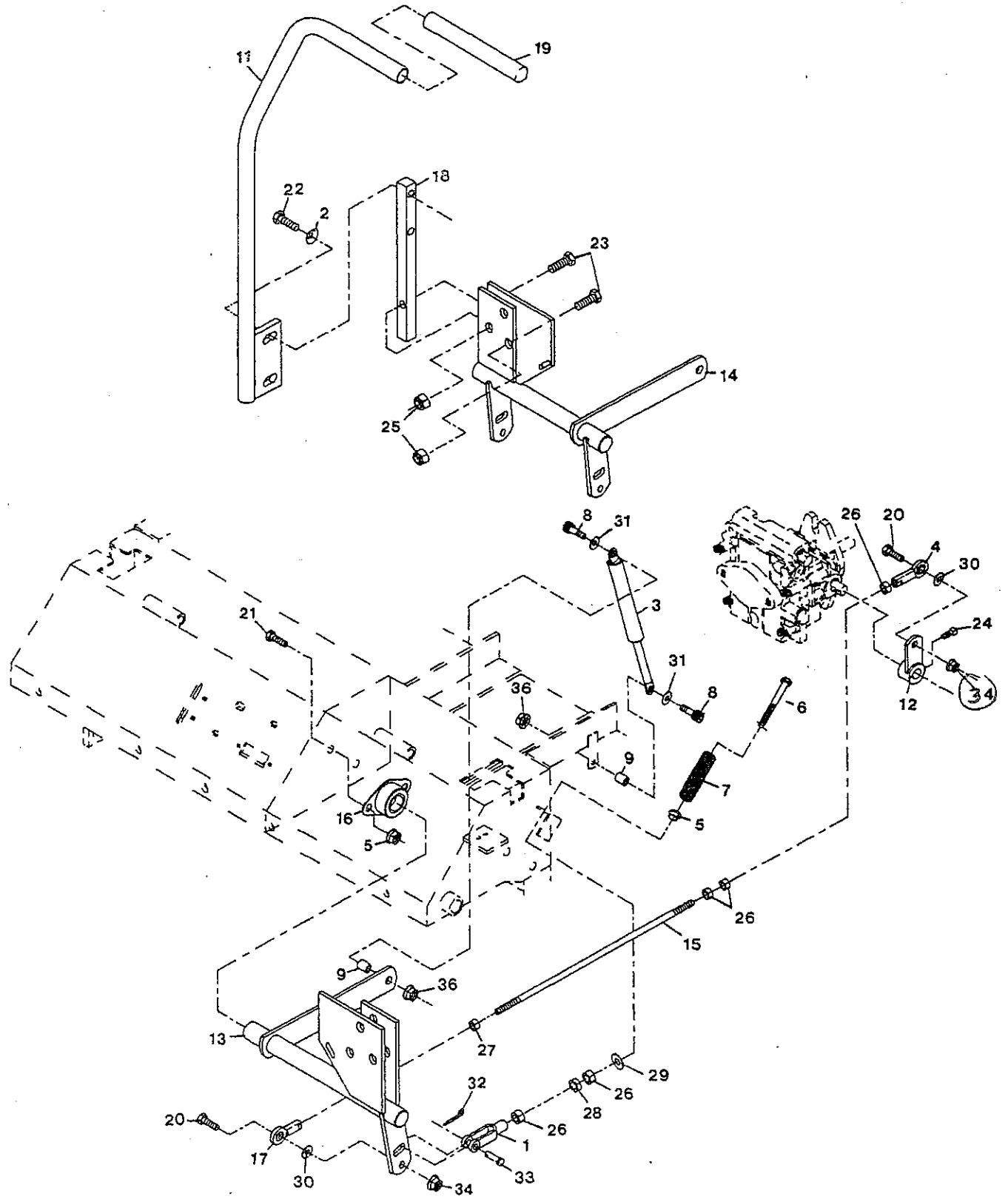
Ref. No.	Part No.	Description	Qty. Req'd.	Ref. No.	Part No.	Description	Qty. Req'd.
1	303105	Yoke .....	2	20	800274	Screw, 5/16-18 x 1 1/4 .....	4
2	303327	Washer, disc spring 3/8 .....	4	21	800290	Screw, 3/8-16 x 3/4 .....	8
3	523027	Dampener.....	2	22	800292	Screw, 3/8-16 x 1 .....	4
4	543017	Ball joint (RH) .....	2	23	800295	Screw, 3/8-16 x 1 3/4 .....	6
5	603735	Bushing, nylon (reverse ind.) .	2	24◇	803022	Set screw, 5/16 x 5/8 .....	2
6	603737	Bolt, (neutral return).....	2	25	804257	Nut, nylock 3/8-16 .....	6
7	603807	Spring, (neutral return).....	2	26	804521	Nut, 5/16-24 .....	10
8◆	809057	Bolt, shoulder 5/16 x 3/4 .....	4	27	804524	Nut, 5/16-24 (LH) .....	2
9	603903	Spacer .....	4	28	804758	Nut, jam 5/16-24 .....	2
10*	632191	Handle, motion control (LH) ...	1	29	805256	Washer, 1/4 std.....	2
11	632193	Handle, motion control (RH) ..	1	30	805258	Washer, 5/16 std.....	4
12	632208	Arm, pump control .....	2	31	805257	Washer, 5/16 SAE .....	4
13	632213	Bracket, motion control (LH) ..	1	32	806753	Pin, cotter 3/32 x 1/2.....	2
14	632215	Bracket, motion control (RH)..	1	33	808280	Pin, clevis 5/16 x 1.....	2
15	633153	Link, pump control .....	2	34	809001	Nut, whizlock 5/16-18.....	4
16	633102	Bearing, flanged .....	4	35	809007	Nut, whizlock 3/8-16.....	8
17	633152	Ball joint (LH).....	2	36	809012	Nut, whizlock 1/4-20.....	4
18	633177	Arm, control shaft .....	2				
19	633257	Grip, motion control handle....	2				

\* Not Illustrated.

◇ Use Pro-Lock, Nut Type (P/N 840022, .5ml tube) on setscrews.

◆ Use Pro-Lock, Retaining Type (P/N 840023, .5cc tube) on damper mounting shoulder bolts.

# MOTION CONTROL LEVERS



## HYDRAULIC GROUP

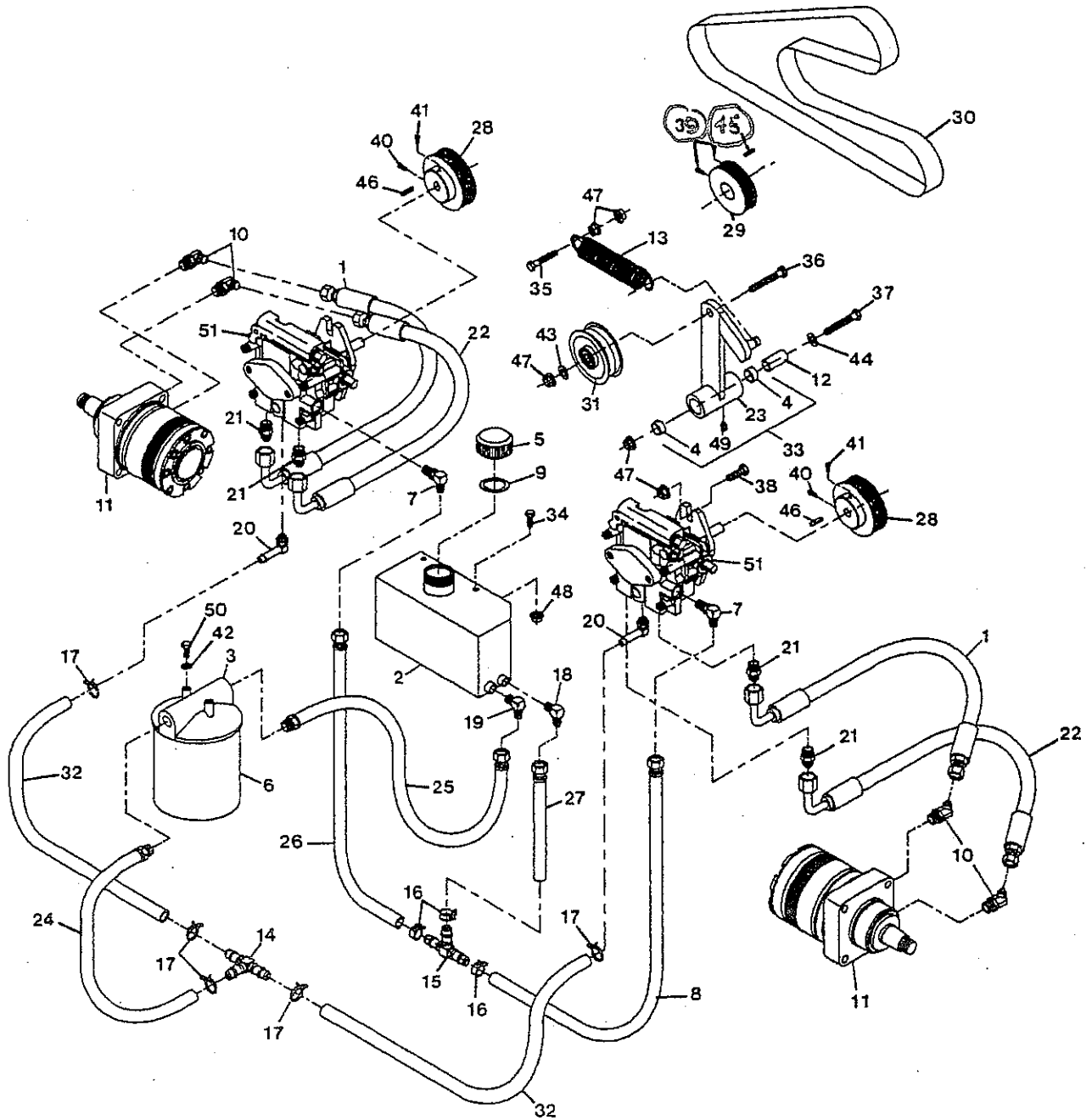
Ref. No.	Part No.	Description	Qty. Req'd.	Ref. No.	Part No.	Description	Qty. Req'd.
1	403102	Hose, high pressure.....	2	23	632201	Arm, pump idler .....	1
2∇	512166	Tank, hydraulic reservoir .....	1	24	632281	Hose, low pressure (12").....	1
3∇	513006	Head, filter .....	1	25	632282	Hose, low pressure (20 1/2")..	1
4	513034	Bearing, pivot.....	2	26	632285	Hose, low pressure (11 1/4")..	1
5	513167	Cap, hydraulic tank.....	1	27	632286	Hose, low pressure (4").....	1
6	513211	Element, hydraulic oil filter.....	1	28	633040	Sheave, pump .....	2
7	513840	Elbow, 90° w/O-ring .....	2	29	633044	Sheave, engine .....	1
	603921	O-Ring .....	1	30	633162	Belt, pump drive.....	1
8	522217	Hose, low pressure (7") .....	1	31	633167	Pulley, idler w/bushing.....	1
9	523103	Gasket, tank cap.....	1	32	633335	Hose, low pressure (14 1/2")..	2
10	523222	Elbow, 45° (w/O-rings).....	4	33	634277	Arm, w/bearing .....	1
	603919	O-Ring (SAE #10).....	1	34	800252	Screw, 1/4-20 x 3/4 .....	2
	603992	O-Ring (37° flare #8).....	1	35	800294	Screw, 3/8-16 x 1 1/2 .....	1
11	523328	Motor, wheel drive .....	2	36	800295	Screw, 3/8-16 x 1 3/4 .....	1
12	603384	Bushing, idler pivot .....	1	37	800805	Screw, 3/8-16 x 3 1/2 .....	1
13	603413	Spring, pump drive idler.....	1	38	803016	Screw, 3/8-16 x 1 whizlock....	4
14	603721	Fitting, tee (1/2" hose).....	1	390	803022	Setscrew, 5/16-18 x 5/8.....	2
15	603722	Fitting, tee (3/8" hose).....	1	400	803046	Setscrew, 5/16-18 x 1.....	2
16	603826	Clamp, hose (1/2") .....	3	410	803050	Setscrew, 5/16-18 x 3/4.....	2
17	603827	Clamp, hose (3/8) .....	5	42	805004	Lockwasher, 1/4 .....	1
18	603987	Elbow, 90° 7/16-JIC x 1/4-NPT	1	43	805258	Washer, 5/16 std .....	1
19	603988	Elbow, 90° 9/16-JIC x 1/4-NPT	1	44	805260	Washer, 3/8 std .....	1
20	603989	Elbow, 90° (w/O-ring).....	2	45	807263	Key, 1/4 x 1/4 x 1 1/4.....	1
	603923	O-Ring (SAE #4).....	1	46	807272	Key, 5mm x 5mm x 25mm.....	2
21	603990	Connector, strght. (w/O-rings)	4	47	809007	Nut, 3/8-16 whizlock.....	8
	603920	O-Ring (SAE #8).....	1	48	809012	Nut, whizlock 1/4-20.....	2
	603992	O-Ring (37° flare #8).....	1	49	811008	Zerk, 90° 1/4-28.....	1
22	613034	Hose, high pressure.....	2	50	800251	Screw, 1/4-20 x 5/8.....	2
				51	603841	Pump, hydro.....	2

◇ Use Pro-Lock, Nut Type (P/N 840022, 5 ml tube) on setscrews.

∇ Use Teflon pipe sealant on pipe threads in reservoir & filter head.



# HYDRAULIC GROUP



## ENGINE DECK GROUP

Ref. No.	Part No.	Description	Qty. Req'd.	Ref. No.	Part No.	Description	Qty. Req'd.
1	213069	Spacer, strut adjustment.....	4	18*	634310	Shield (RH) - subassembly.....	1
2	303335	Plastic tie .....	1	19	523285	Clip, shield.....	2
3	523420	Bumper, rubber.....	2	20*	633303	Baffle, engine (RH).....	1
4	543007	Spacer .....	2	21	800032	Bolt, tap 3/8-16 x 3 .....	2
5	602974	Cable assembly .....	2	22	800252	Screw, 1/4-20 x 3/4 .....	10
6	603610	Washer, spring disc.....	2	23	800276	Screw, 5/16-18 x 1 3/4 .....	1
7	632183	Guard, rear engine.....	1	24	800292	Screw, 3/8-16 x 1 .....	2
8	633082	Bushing.....	2	25☐	800819	Screw, 7/16-20 x 2 1/2 .....	1
9	633098	Clutch (use with 22 HP Motor)	1	26	803035	Rivet, 3/16 x 1/4 .....	9
	633099	Clutch (use with 25 HP Motor)	1	27	804255	Nut, nylock 1/4-20 .....	4
10	633453	Spacer (use with 22 HP Motor)	1	28	804257	Nut, nylock 3/8-16 .....	2
	633179	Spacer (use with 25 HP Motor)	1	29	805256	Washer, 1/4 std .....	4
11	634308	Shield, lift - subassembly .....	1	30	805258	Washer, 5/16 std .....	1
12	633298	Shield, engine.....	1	31	809001	Nut, whizlock 5/16-18.....	1
13	633300	Shield, lift .....	1	32	809007	Nut, whizlock 3/8-16.....	4
14	634309	Shield (LH) - subassembly .....	1	33	809012	Nut, whizlock 1/4-20.....	7
15	633301	Shield, heat.....	1	34	633396	Clip, loom .56.....	1
16	633305	Baffle, engine (LH).....	1	35	809075	Screw, M6 x 1.0mm x 10mm..	4
17	633337	Shield, muffler.....	1				

\* Not Illustrated.

☐ Use Pro-Lock, Nut Type (P/N 840022, .5ml tube) on clutch bolt.

### Kohler Replacement Parts List

**Note:** Refer to Engine Owner's Manual

<u>Description</u>	<u>Kohler Part No.</u>
--------------------	------------------------

Engine Oil Filter .....	1205001
-------------------------	---------

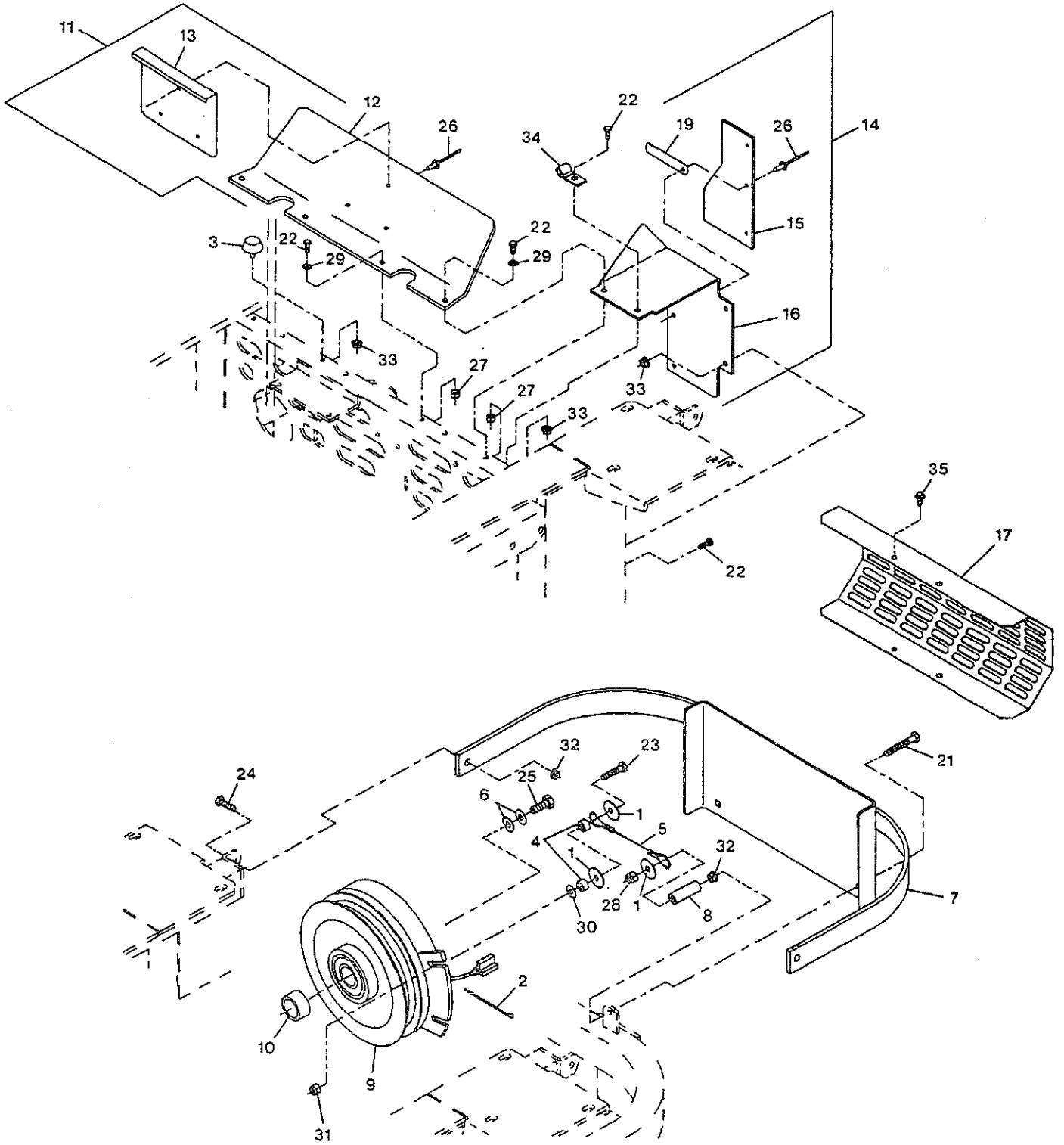
Air Precleaner .. (For 22 HP Engine)	2408302
--------------------------------------	---------

..... (For 25 HP Engine)	2408305
--------------------------	---------

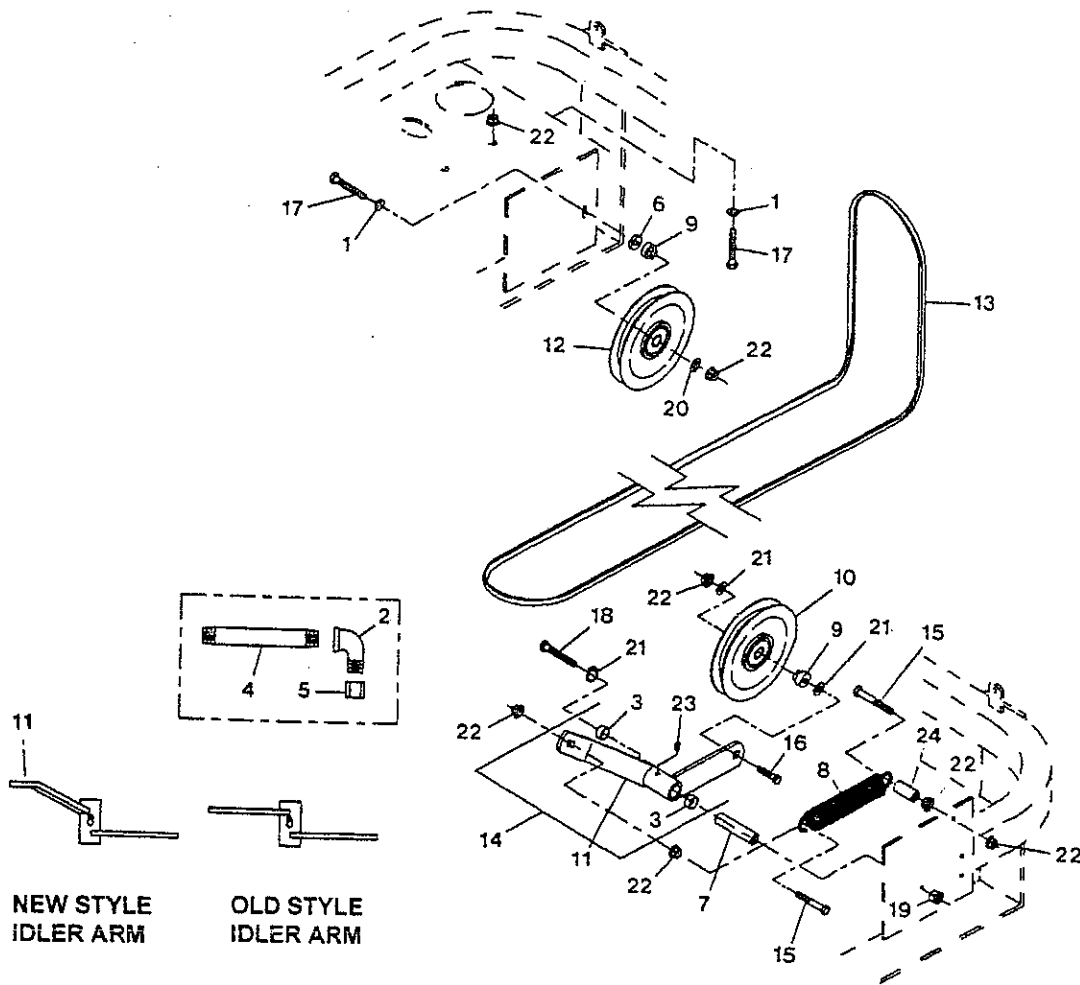
Air Filter .....	(For 22 HP Engine) 4708303
------------------	----------------------------

..... (For 25 HP Engine)	2708303
--------------------------	---------

# ENGINE DECK GROUP



## ENGINE DECK GROUP (con't.)



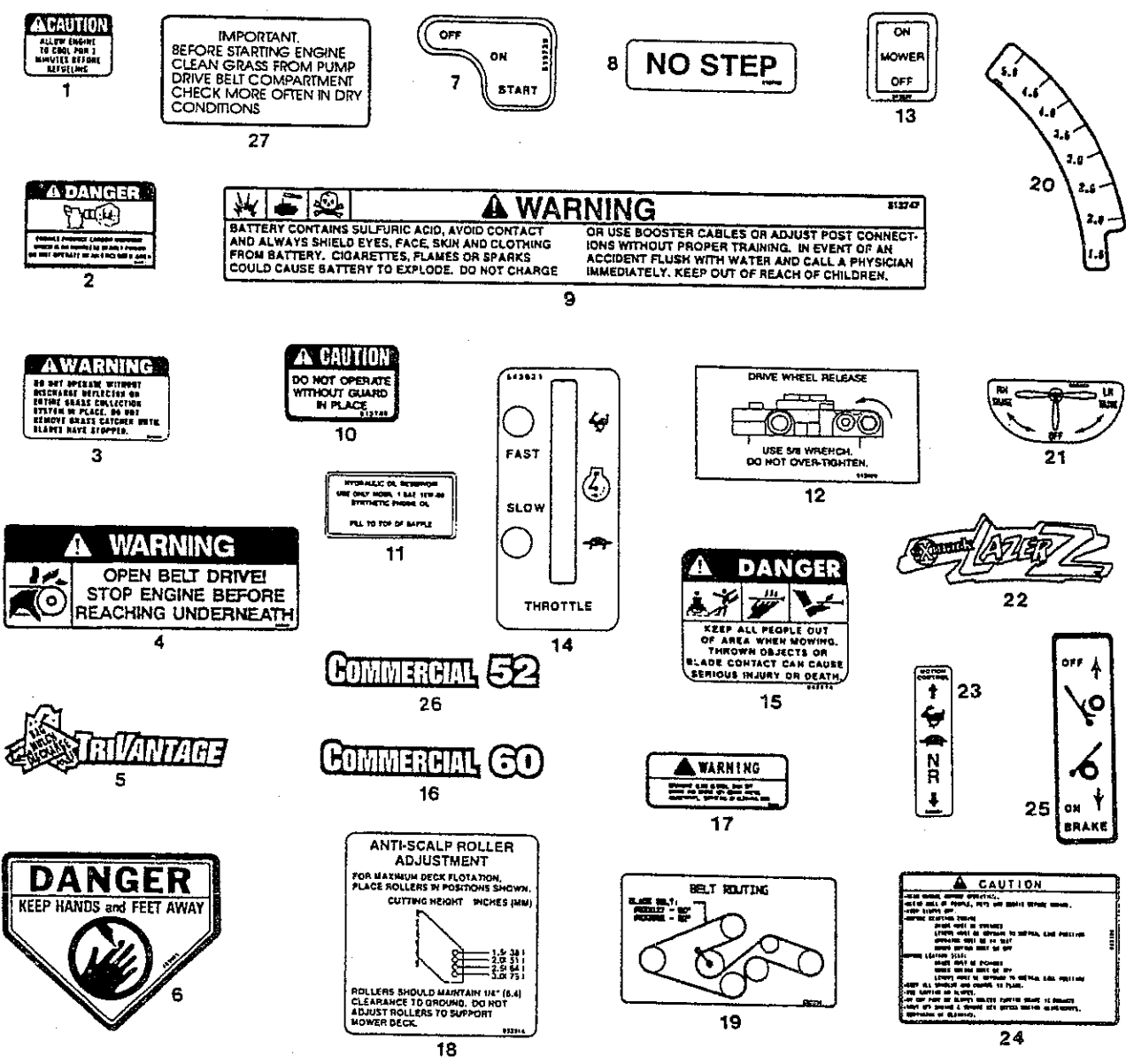
SEE NOTE ♦ BELOW

Ref. No.	Part No.	Description	Qty. Req'd.	Ref. No.	Part No.	Description	Qty. Req'd.
1	303327	Washer, spring disc 3/8 .....	6	13	633173	Belt, mule drive.....	1
2▽	403124	Elbow, 3/8 NPT.....	1	14	634272	Arm, idler sub assembly .....	1
3	513034	Bearing .....	2	15	800297	Screw, 3/8-16 x 2 1/4 .....	2
4▽	543232	Nipple, pipe 3/8 NPT.....	1	16	800295	Screw, 3/8-16 x 1 3/4 .....	5
5▽	543233	Cap, oil drain 3/8 NPT .....	1	17	800299	Screw, 3/8-16 x 2 3/4 .....	1
6	603050	Spacer .....	1	18	800805	Screw, 3/8-11 x 3 1/2 .....	1
7	603384	Bushing, idler pivot .....	1	19	804257	Nut, nylock 3/8.....	1
8	603402	Spring, mule idler .....	1	20	805258	Washer, 5/16 .....	1
9	603496	Bushing, idler .....	2	21	805260	Washer, 3/8 .....	2
10	603805	Pulley, idler .....	1	22	809007	Nut, whizlock 3/8-16 .....	10
11♦	632468	Arm, idler .....	1	23	811008	Zerk, 1/4-20 (90°) .....	1
12	633166	Pulley, idler .....	1	24	603401	Spacer, spring .....	1

▽ Use a Teflon Pipe Sealant or equivalent on threads.

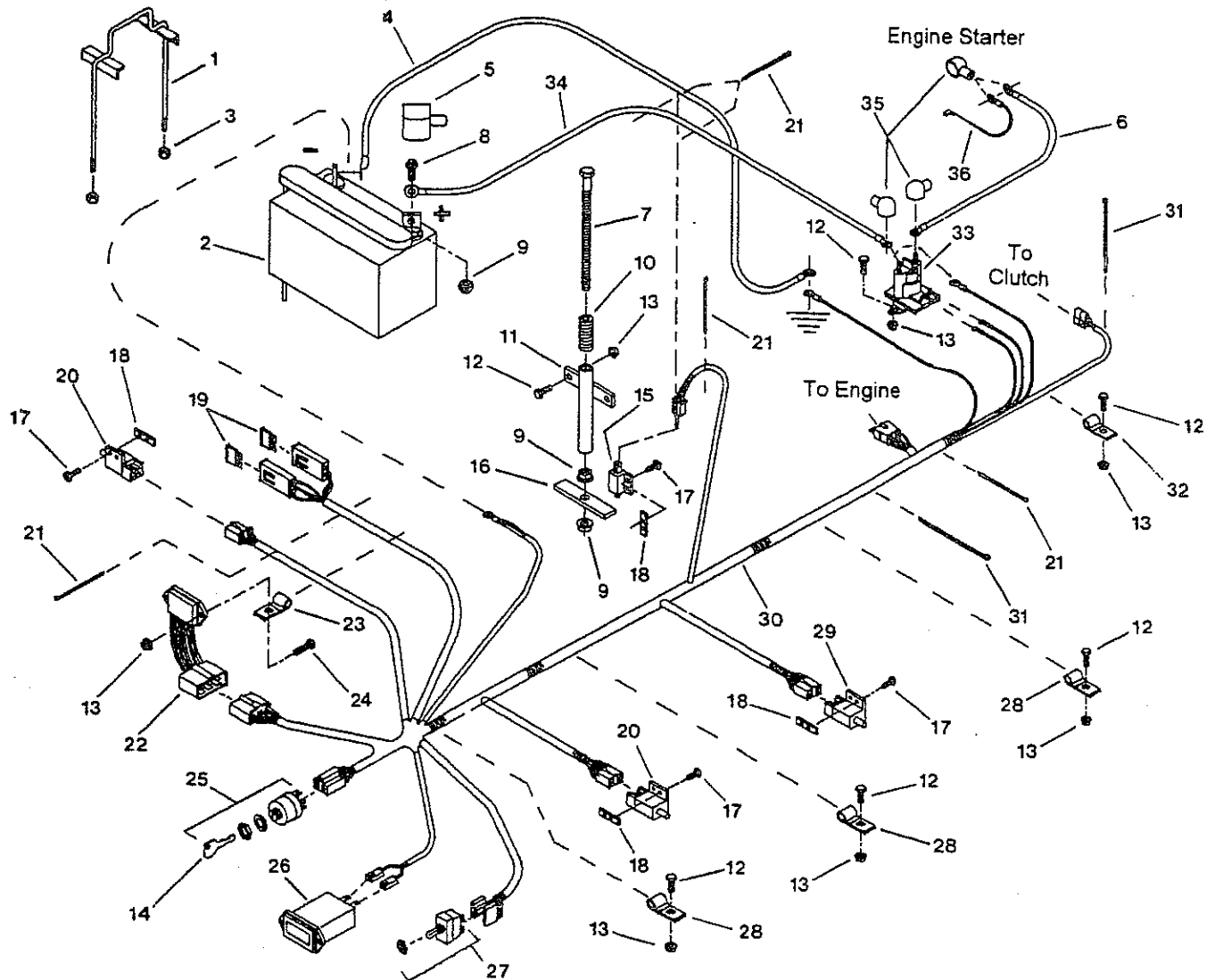
♦ Check current idler arm. If there is no offset in one of the arms, as shown, it is an old style arm. Part No. 631470 (Kit - Mule Drive Idler) must be ordered to replace the old style idler arm. The new idler arm stops idler pulley from rubbing on spring.

# DECALS



Ref. No.	Part No.	Description	Qty. Req'd.	Ref. No.	Part No.	Description	Qty. Req'd.
1	303293	Decal, 2 Minute Cool	2	15	543774	Decal, Danger	1
2	303481	Decal, Carbon Monoxide	1	16	613050	Decal, Commercial 60	1
3	303508	Decal, Discharge Warning	1	17	633313	Decal, Warning	1
4	303517	Decal, Belt Drive Warning	1	18	633314	Decal, Anti-Scalp	1
5	303520	Decal, TriVantage	1	19	633344	Decal, Belt Routing	1
6	403005	Decal, Danger	2	20	633345	Decal, Deck Height	1
7	513739	Decal, Ignition	1	21	633346	Decal, Fuel Valve	1
8	513742	Decal, No Step	2	22	633350	Decal, Lazer Swash	2
9	513747	Decal, Battery	1	23	633354	Decal, Motion Control	2
10	513748	Decal, Guard (Caution)	1	24	633390	Decal, Instructional	1
11	513890	Decal, Hydraulic Tank	1	25	633391	Decal, Brake	1
12	513929	Decal, Drive Release	1	26	403132	Decal, Commercial 52	1
13	543626	Decal, Blade Engagement	1	27	633462	Decal, Important	2
14	543631	Decal, Throttle	1				

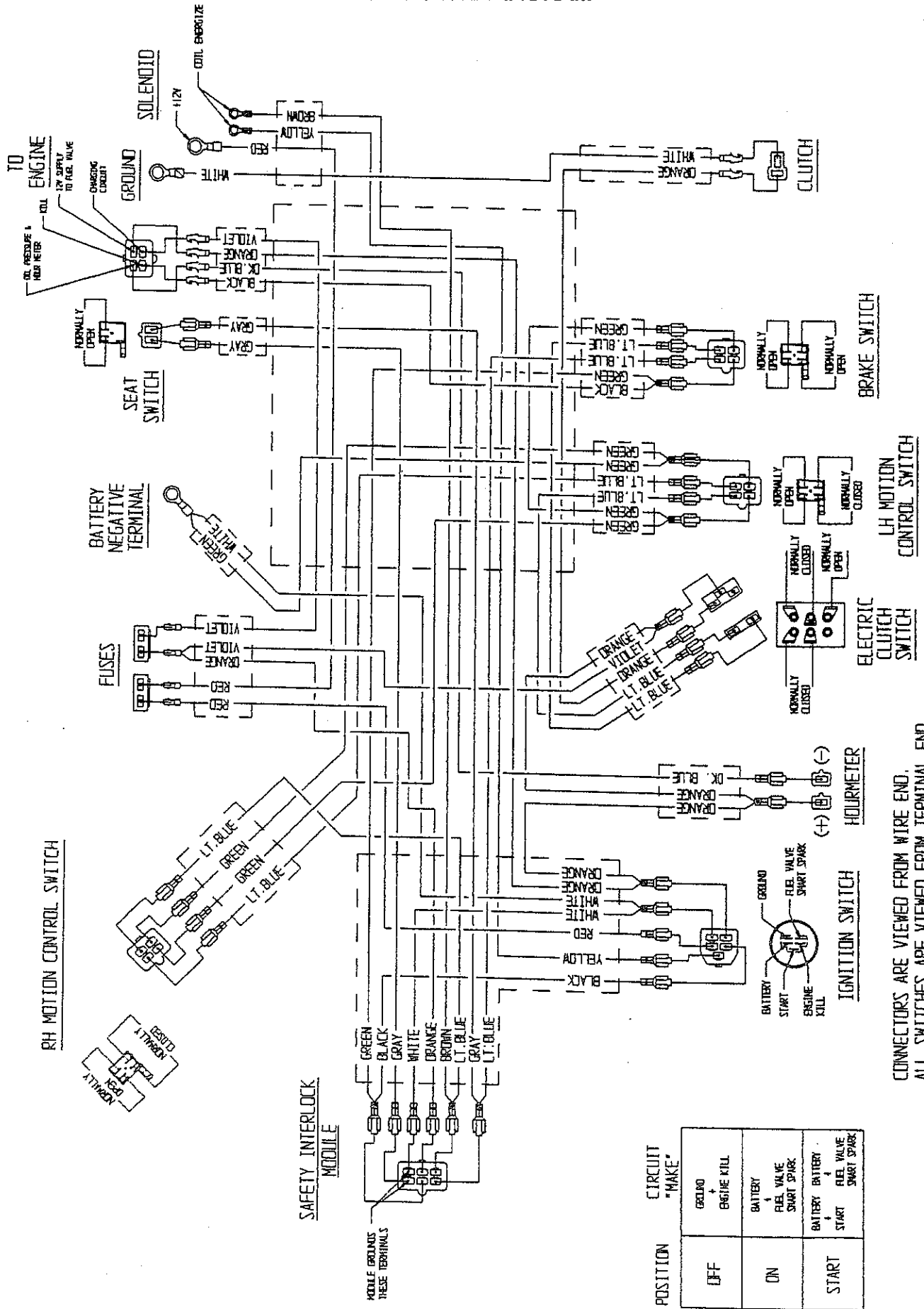
# ELECTRICAL GROUP



Ref. No.	Part No.	Description	Qty. Req'd.	Ref. No.	Part No.	Description	Qty. Req'd.
1	632321	Holdown wldmt.-battery.....	1	19	816001	Fuse-20 amp.....	2
2	603479	Battery-12V.....	1	20	633111	Switch-drive lever N.O./N.C....	2
3	804256	Nut, 5/16-18 nylock.....	2	21	303287	Plastic tie (small).....	5
4	633307	Cable-battery (-) 40".....	1	22	543316	Module-safety interlock.....	1
5	543391	Insulator-battery.....	1	23	513762	Clip-loom .50.....	1
6	633306	Cable-starter (+) 8".....	1	24	800254	Screw, 1/4-20x1".....	1
7	800282	Screw, 5/16-18x7".....	1	25	543070	Switch-ignition w/ keys.....	1
8	800271	Screw, 5/16-18x3/4.....	2	26	513374	Meter- engine hours.....	1
9	809001	Nut, 5/16-18 whizlock.....	4	27	543018	Switch- blade w/ nut.....	1
10	523415	Spring- seat switch.....	1	28	633396	Clip- loom .69.....	3
11	522424	Spring mount wldmt.....	1	29	633110	Switch- brake N.O./N.O.....	1
12	800252	Screw, 1/4-20x3/4.....	8	30	633284	Harness-wiring.....	1
13	809012	Nut, 1/4-20 whizlock.....	9	31	303335	Plastic tie (large).....	2
14	603511	Keys, ignition.....	1	32	323229	Clip- loom .38.....	1
15	513152	Switch- seat N.C.....	1	33	513075	Switch- 12v solenoid.....	1
16	513180	Actuator, seat switch.....	1	34	523281	Cable- battery (+) 30".....	1
17	803028	Screw, #10-24x5/8.....	8	35	543393	Insulator, solenoid (+).....	3
18	633181	Plate- tapped.....	4	36	543084	Wire- starter solenoid.....	1

◊ Use dielectric grease on all wiring harness connectors.

# ELECTRICAL DIAGRAM



CONNECTORS ARE VIEWED FROM WIRE END.  
ALL SWITCHES ARE VIEWED FROM TERMINAL END.

# SERVICE RECORD

Date	Description of Work Done	Service Done By





## NOTES

## NOTES

**SEE EXMARK'S COMPLETE  
LINE OF PRODUCTS FOR TURF CARE**

**LAZER Z**

**EXPLORER**

**EXPLORER II**

**TURF RANGER**

**TURF TRACER HYDRO**

**VIKING 5-SPEED**

**VIKING HYDRO**

**METRO**

**SELF STEERING SULKY**

**GRASS CATCHER**

**MICRO-MULCHING ACCESSORY**

**EXMARK MFG. CO. INC.  
INDUSTRIAL PARK BOX 808  
BEATRICE, NE. 68310**

**PART NO. 850389  
(402) 223-4010  
FAX (402) 223-4154**

**ALL RIGHTS RESERVED**

**PRINTED IN U.S.A.**

