



M216KA

For Serial Nos.  
260,000 & Higher



PARTS MANUAL

# METRO<sup>®</sup> 21

## ZONE START HAND PUSH MODEL

**CONGRATULATIONS** on the purchase of your new Exmark mower. This product has been carefully designed and manufactured to give you a maximum amount of dependability and years of trouble-free operation.

If additional information is needed, or should you require trained mechanic service, contact your authorized Exmark equipment dealer or distributor.

If you need to order replacement parts from your dealer, always give the model number and serial number of your mower as well as the part number, description and quantity of the part needed.

The Serial No. plate is located on the top of the mower deck on the right hand rear corner.

For ease of ordering and reference, we suggest that you record the information requested in the following identification table.

Model No. \_\_\_\_\_

Serial No. \_\_\_\_\_

Engine Model No. \_\_\_\_\_

Engine Serial No. \_\_\_\_\_

Date Purchased \_\_\_\_\_

Paste Label From  
Literature Packet Here



# EXMARK PARTS PLUS® PROGRAM

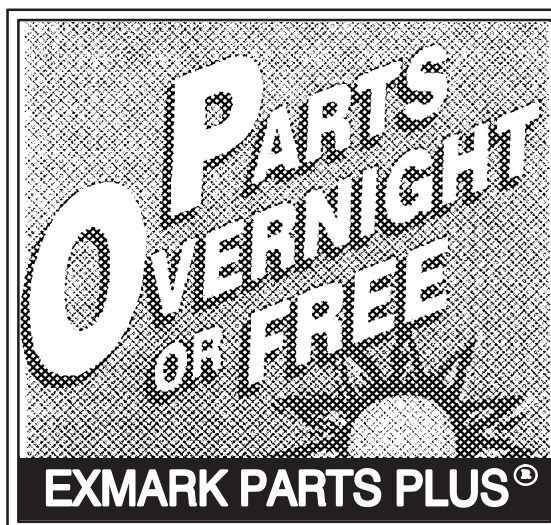
EFFECTIVE DATE: September 1, 1995

## Program

If your Exmark dealer does not have the Exmark part in stock, Exmark will get the parts to the dealer the next business day or the part will be FREE\* Guaranteed!!

## How the Program Works

1. If dealer does not have part in stock for a "down" unit at the time of request by customer, the dealer contacts his distributor by 1:00 p.m., local time, and requests Exmark Parts Plus® shipment of six (6) line items or less.
2. Distributor ships part(s) to dealer or customer, as requested by dealer, same day, overnight UPS. Distributor bills dealer for part and freight charges where applicable.
3. If distributor does not have the part(s) in stock to satisfy Exmark Parts Plus® order, he contacts Exmark by 3:00 p.m., central time, with an Exmark Parts Plus® order of six (6) line items or less.
4. If order is received by 3:00 p.m. central time, Exmark ships part(s) direct to dealer or customer, as requested by distributor, same day, overnight UPS, Exmark bills the distributor for parts and shipping charges, where applicable.
5. The customer pays for the part and freight if it is shipped under the Exmark Parts Plus® and if it arrive in accordance to the program.
6. Who pays for the part and freight if it fails to arrive overnight in accordance to the program?
  - A. Under any circumstance the customer does not pay.
  - B. If the part does not arrive overnight due to:
    1. The dealer not submitting the Exmark Parts Plus® order to his Exmark distributor by 1:00 p.m., the dealer pays for the part and freight
    2. The Distributor being unable to ship the part the same day or not submitting the Exmark Parts Plus® order to Exmark by 3:00 p.m., central time, the Distributor pays for the part and freight.
    3. Exmark being unable to ship the part and the Exmark parts order is received by 3:00 p.m., central time, Exmark pays for the part and freight.
    4. If the part does not arrive overnight due to the shipper (UPS), the shipper pays for the freight and Exmark pays for the part.



**The following restrictions apply** — The Exmark Parts Plus® Program is available only through participating Exmark Dealers and applies only to orders submitted on this program Monday through Thursday. Parts Plus service is available only in the 48 contiguous United States. UPS has initiated a Saturday delivery program to many areas of the continental United States and can be requested for an overnight shipment on Friday to be delivered Saturday. The next day air charge, plus the Saturday delivery fee will be the responsibility of the purchaser. Exmark Mfg. will assume no responsibility for Saturday delivery shipments. To qualify, all Exmark Parts Plus® orders must be received by Exmark by 3:00 p.m., central time. Orders must be six (6) line items or less. Exclusions from the Exmark Parts Plus® Program are: Any wholegood or accessory in its entirety, engines and engine replacement parts, 5-speed Peerless transmissions and 5-speed transaxles, hydraulic or hydrostatic wheel motors, cutter decks and engine decks or any item exceeding United Parcel Service size and weight restrictions.

Due to UPS restrictions, aerosol spray paint is considered a hazardous material and cannot be shipped via UPS next day or Second Day Air.

Exmark Manufacturing stocks a limited supply of parts for transaxles, pumps and wheel motors. These parts can be ordered for Next Day Air shipment but will not be guaranteed per the Parts Plus Program.



# WARNING

READ OPERATOR'S MANUAL BEFORE  
OPERATING OR SERVICING EXMARK EQUIPMENT.

## TABLE OF CONTENTS

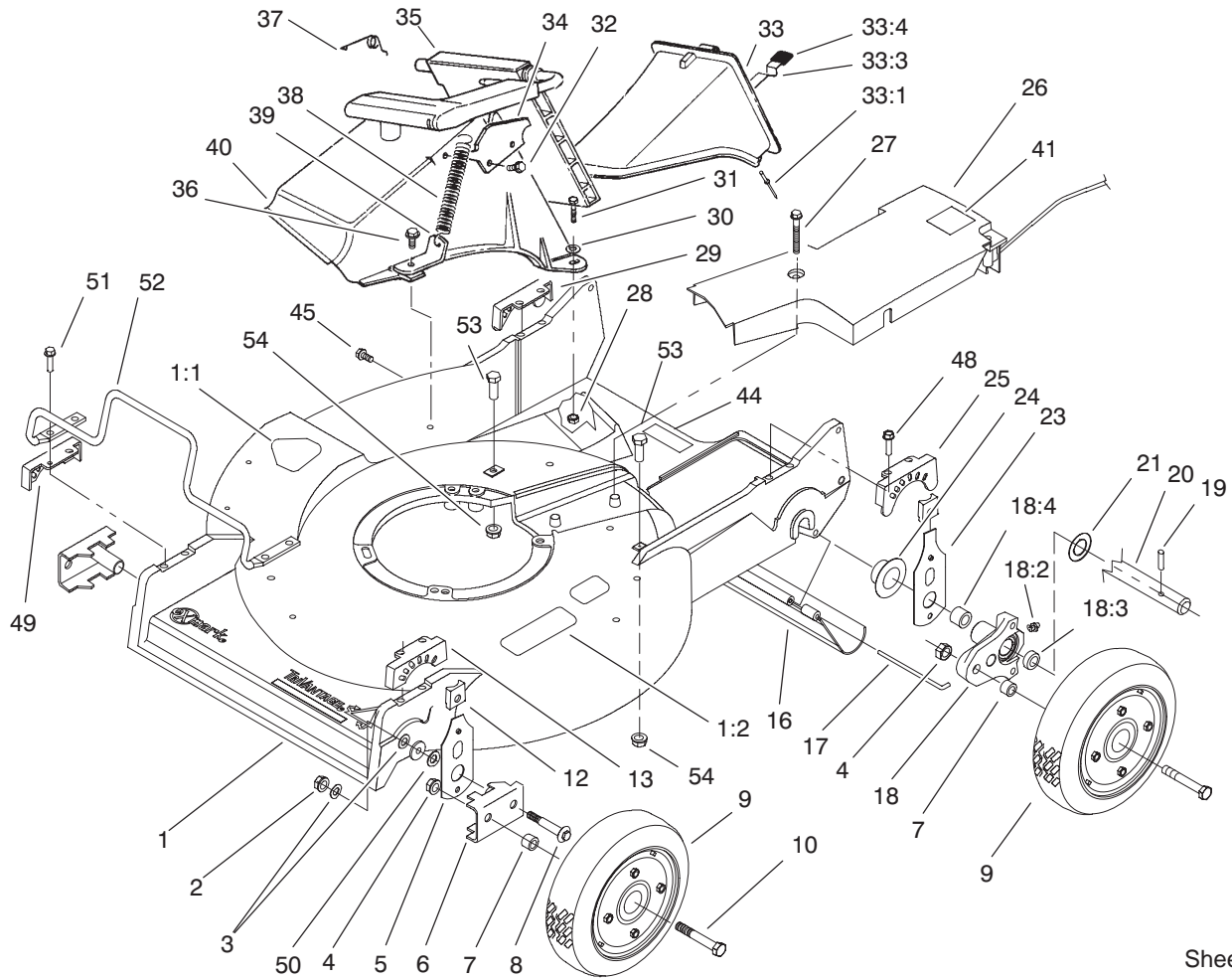
<u>Description</u> .....	<u>Page</u>
Housing Assembly .....	4
Wheel & Tire Assembly No. 100–2870 .....	6
Engine and Blade Assembly .....	7
Handle Assembly .....	8
Grass Bag Assembly No. 100–2886 .....	9

### **Service Assemblies**

Parts within service assemblies have reference numbers in the form *X:Y*. *X* is the reference number of the service assembly and *Y* is a sequential number unique to each part within the service assembly.

For example, a wheel assembly might be identified by reference number 6, the tire by 6:1, the valve by 6:2, and the wheel by 6:3. When you order the assembly identified by reference number 6, you receive all parts identified by reference numbers 6:1, 6:2, and 6:3. However, you may also order any part individually.

Reference numbers of this type appear in part lists and as callouts in illustrations.

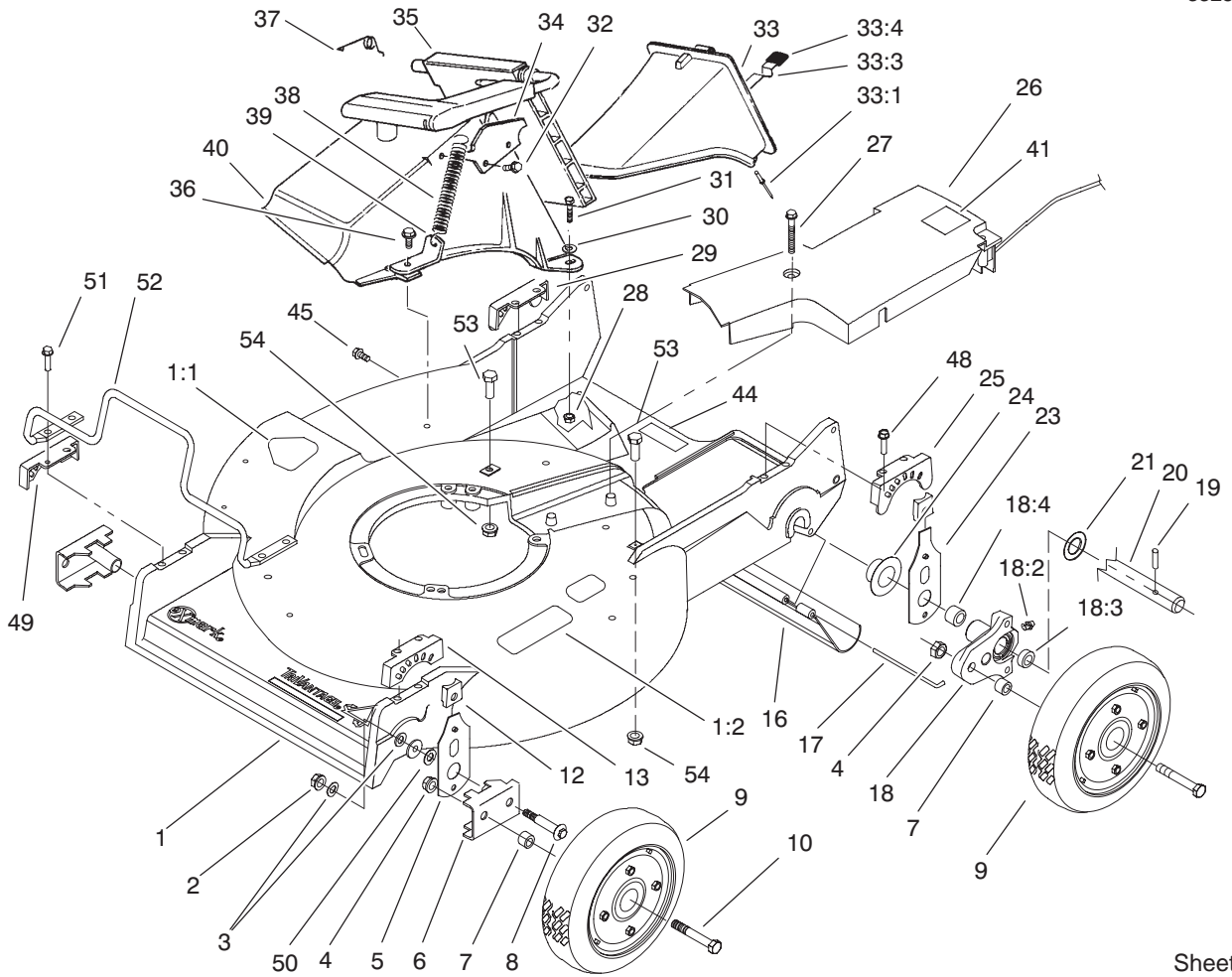


Sheet No.:2

## Housing Assembly

Ref. No.	Part No.	Qty.	Description
1	98-8027	1	Housing ASM
1:1	39-5770	1	Decal-Danger
1:2	100-3279	1	Decal-Warning
2	3296-6	2	Nut-Lock, NI
3	40-1940	4	Washer
4	32152-2	4	Nut-Conelock
5	66-7560	2	Front Spring Arm ASM
6	61-8300	2	Arm-Pivot, Front
7	52-2480	4	Spacer-Wheel
8	27-6232	2	Bolt-Wheel
9	100-2870	4	Wheel & Tire ASM
10	323-12	4	Screw-HH
12	25-7740	4	Knob-Arm
13	49-8760	1	Quadrant-Front, LH
16	44-0580	1	Shield-Trailing
17	33-3208	1	Rod-Shield
18	42-3510	2	Pivot Arm ASM
18:2	302-56	1	Fitting-Zerk
18:3	47-2890	1	Bushing
18:4	47-2900	1	Bushing
19	32121-108	2	Pin-Spirol
20	49-8790	1	Shaft-Rear Axle
21	36-4780	4	Washer
23	66-7561	2	Rear Spring Arm ASM
24	48-2170	2	Cap-End
25	49-8740	1	Quadrant-Rear, LH

Ref. No.	Part No.	Qty.	Description
26	99-6296	1	Cover-Belt
27	37-7260	2	Screw-HH
28	3296-42	2	Nut-Lock, NI
29	49-8750	1	Quadrant-Rear, RH
30	3256-22	2	Washer-Flat
31	321-7	2	Screw-HH
32	46-8090	2	Screw-Plastite
33	77-0500	1	Discharge Plug ASM
33:1	3295-35	1	Rivet-Head, Flat
33:3	76-4640	1	Latch-Plug, Discharge
33:4	76-4650	1	Grip-Latch
34	93-3154	1	Latch-Plate
35	93-7351	1	Discharge Door ASM
36	46-6811	1	Screw-HWH
37	80-3770	1	Retainer-Door
38	76-4660	1	Spring-Door
39	71-9350	1	Bracket-Spring
40	82-9152	1	Tunnel-Discharge
41	52-2610	1	Label-HP Grease
44	1-213240	1	Decal-Warning
45	46-6810	1	Screw & Washer ASM
48	49-2040	4	Screw-Tapping
49	49-8770	1	Quadrant-Front, RH
50	257-3	2	Washer-Thrust
51	32144-86	4	Screw-HH
52	99-6722	1	Guard-Engine



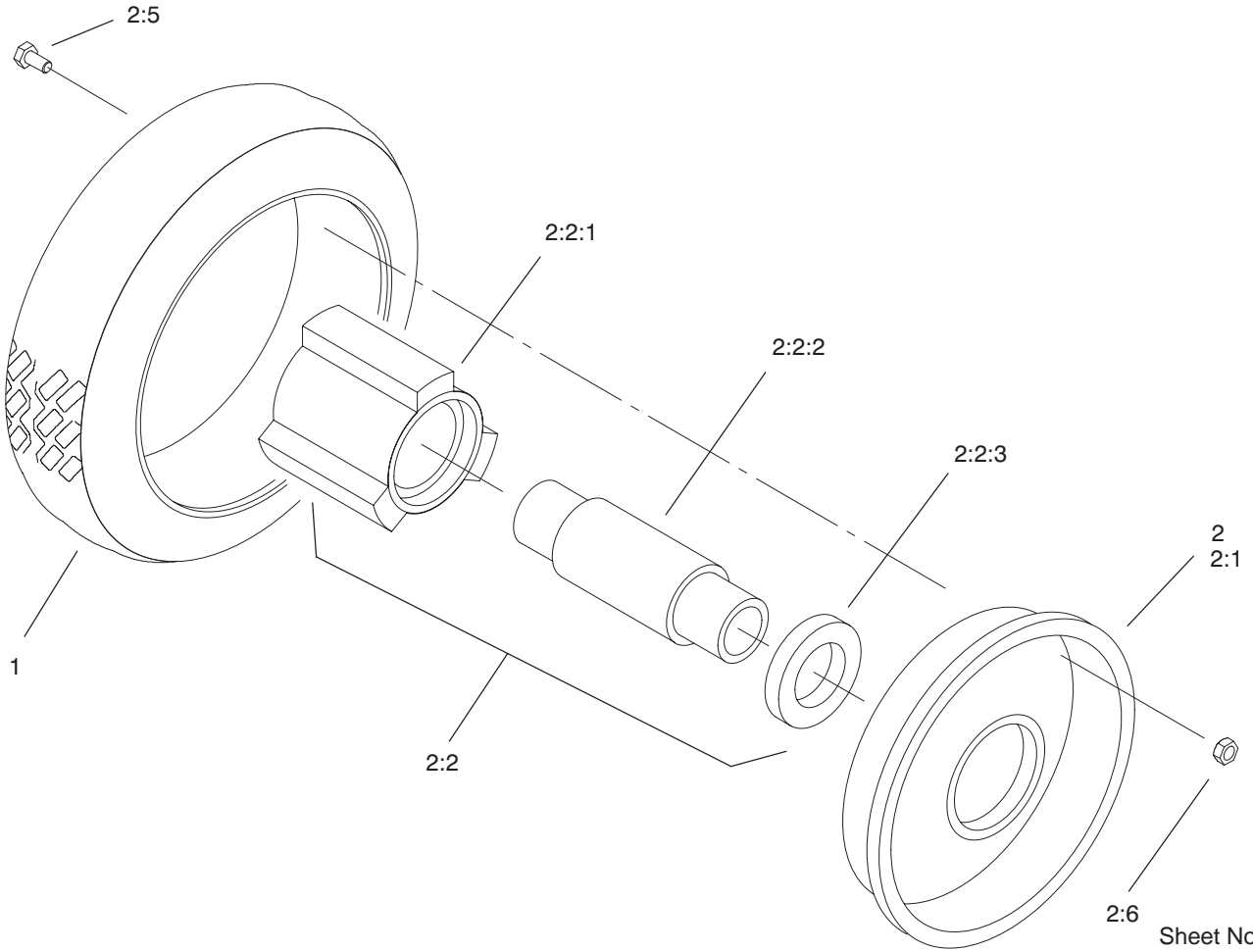
Sheet No.:2

### Housing Assembly (Continued)

Ref. No.	Part No.	Qty.	Description
53	323-6	2	Screw-HH
54	3296-39	2	Nut-Lock, NI

Ref. No.	Part No.	Qty.	Description

3325-145

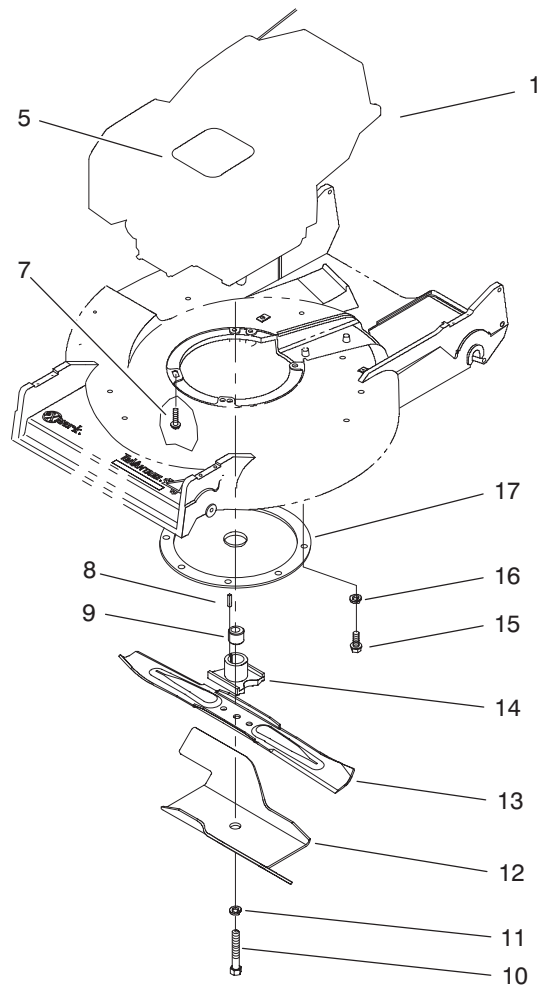


## Wheel and Tire Assembly No. 100-2870

Ref. No.	Part No.	Qty.	Description
1	53-7740	1	Tire
☆2		1	Wheel ASM
2:1	53-7780-06	2	Plate-Wheel, Half
2:2		1	Hub & Bearing ASM
2:2:1	52-2410	1	Hub-Bearing
2:2:2	52-2440	1	Spacer-Bearing
2:2:3	52-2450	2	Bearing-Wheel
2:5	321-2	4	Screw-HH
2:6	3296-42	1	Nut-Lock, NI

Ref. No.	Part No.	Qty.	Description

☆ Not serviced



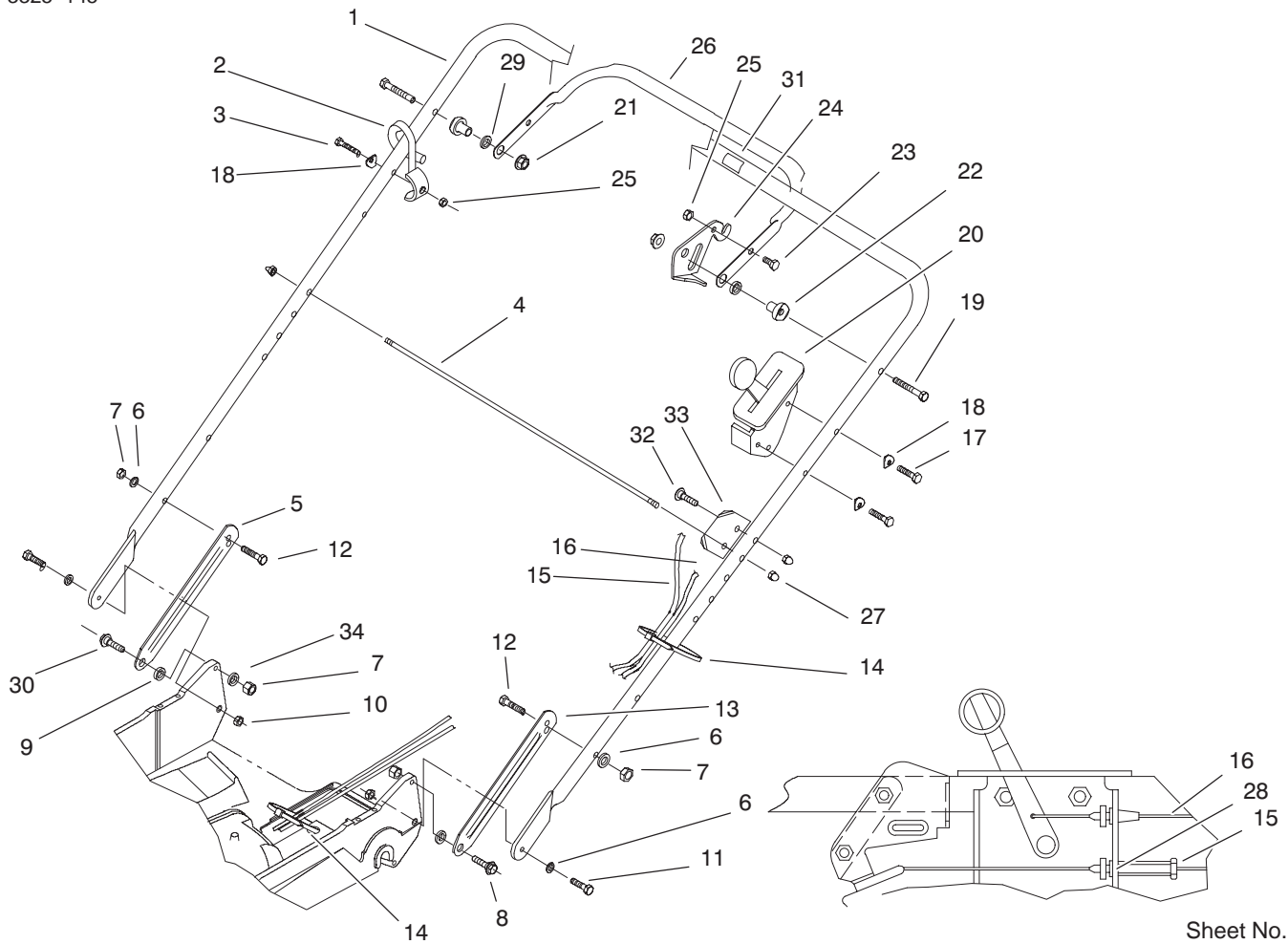
Sheet No.:3

### Engine and Blade Assembly

Ref. No.	Part No.	Qty.	Description
1		1	Engine-Kawasaki, FC150V-FS29
5	1-213387	1	Decal-Recoil
7	100-2835	3	Screw-Mount, Engine
8	27-8590	1	Key-Square
9	99-6279	1	Spacer-Blade Retainer
10	26-0670	1	Screw-Blade
11	3253-22	1	Washer-Lock
12	92-1599-03	1	Stiffener-Blade
13	42-1000	1	Blade - 21"
14	99-6283	1	Retainer-Blade
15	32144-70	3	Screw-HH
16	3254-6	3	Washer-Lock, Internal
17	48-2591	1	Protector-Crankshaft

Ref. No.	Part No.	Qty.	Description





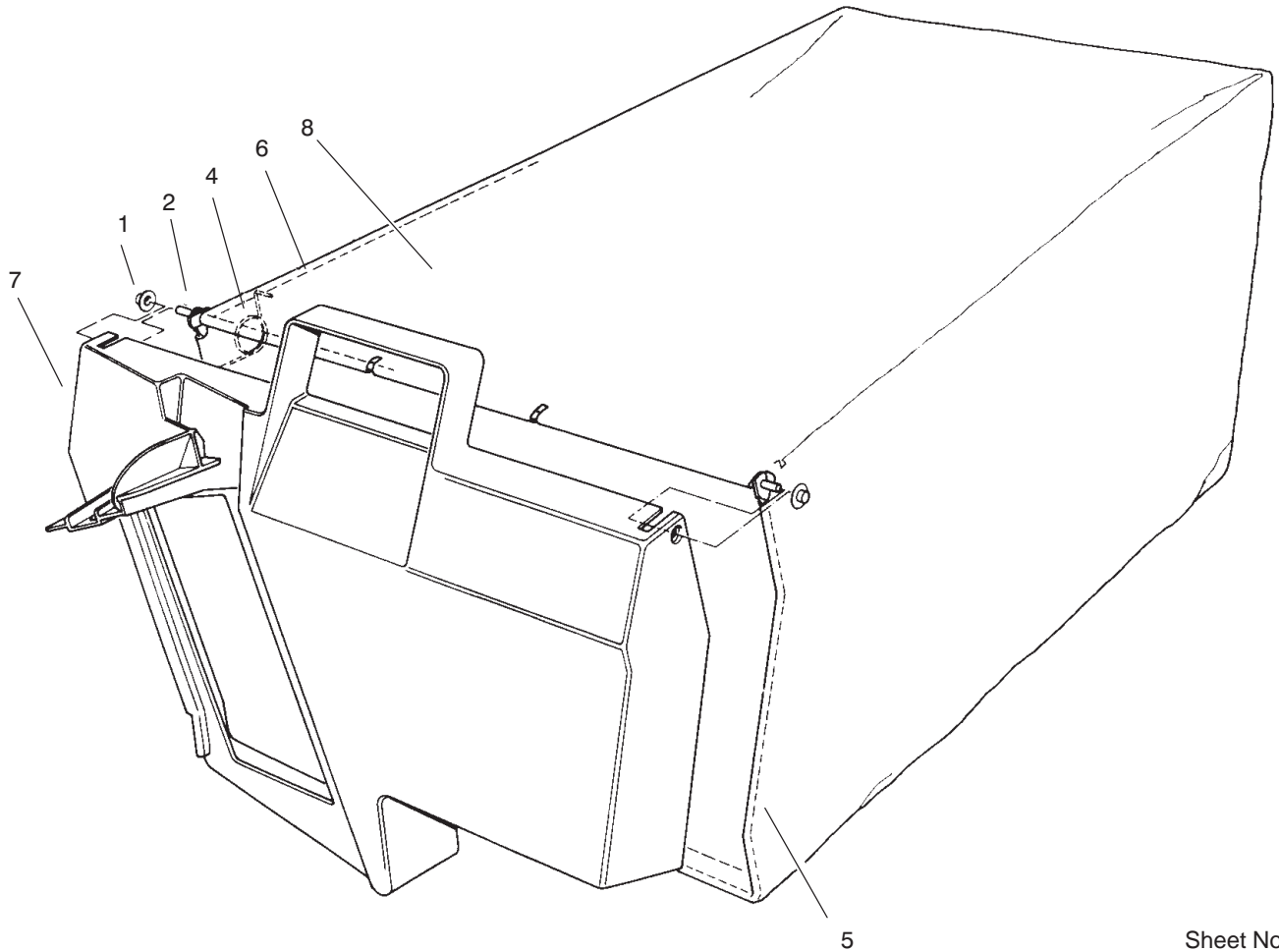
Sheet No.:4

## Handle Assembly

Ref. No.	Part No.	Qty.	Description
1	98-2000-03	1	Handle
2	46-8081	1	Guide-Rope
3	321-9	1	Screw-HH
4	48-2810	1	Rod-Support, Bag
5	103-0142	1	Latch-Handle, RH
6	3290-456	4	Washer-Belleville
7	3296-29	4	Nut-Lock
8	27-7210	1	Screw-Shoulder
9	3-3287	2	Spacer-Latch, Handle
10	3296-47	2	Nut-Lock, NI
11	322-6	2	Screw-HH
12	322-7	2	Screw-HH
13	103-0143	1	Latch-Handle, LH
14	3290-378	2	Tie-Cable
15	100-2838	1	Cable-Brake
16	70-1061	1	Cable-Throttle
17	321-13	2	Screw-HH
18	3-7501	3	Washer
19	322-11	2	Screw-HH
20	82-9950	1	Control-Throttle
21	3296-58	2	Nut-Lock NI
22	49-1630	2	Spacer-Support
23	321-4	1	Screw-HH
24	66-5350	1	Lever-Control
25	3296-42	2	Nut-Lock, NI
26	61-8270-03	1	Bar-Control

Ref. No.	Part No.	Qty.	Description
27	32111-7	3	Nut-Cap
28	32151-86	2	E-Ring
29	256-276	2	Spacer-Nylon
30	27-7211	1	Screw-Shoulder
31	104-1329	1	Decal-Hearing Protection
32	3229-3	1	Screw-CARR
33	104-1326	1	Plate - Bag Aligning
34	3256-23	2	Washer-Flat





Sheet No.:A2

### Grass Bag Assembly No. 100-2886

Ref. No.	Part No.	Qty.	Description
1	3290-422	2	Nut-Push
2	33-4820	1	Hinge-Door, Bag
4	36-6910	2	Spring
5	42-4020	1	Frame-Bag
6	42-4030	1	Frame-Bag, Upper
7	48-2840	1	Door-Bag, Grass
8	98-8017	1	Bag-Grass

Ref. No.	Part No.	Qty.	Description
----------	----------	------	-------------

## SERVICE RECORD

Date	Description Work Done	Service Done By

## **SERVICE RECORD**

<b>Date</b>	<b>Description Work Done</b>	<b>Service Done By</b>

**SEE EXMARK'S COMPLETE  
LINE OF PRODUCTS FOR TURF CARE**

**LAZER Z<sup>®</sup>**

**LAZER Z<sup>®</sup> HP**

**TURF RANGER<sup>®</sup>**

**TURF TRACER<sup>®</sup>**

**TURF TRACER<sup>®</sup> HP**

**VIKING HYDRO**

**METRO<sup>®</sup>**

**METRO<sup>®</sup> HP**

**SELF STEERING SULKY**

**GRASS CATCHER**

**MICRO MULCH<sup>™</sup> ACCESSORY**

©1997, 1998, 1999, 2000  
EXMARK MFG. CO. INC  
INDUSTRIAL PARK BOX 808  
BEATRICE NE. 68310

FORM NO. 3325-145  
(402) 223-6300  
FAX (402)223-6384

ALL RIGHTS RESERVED

PRINTED IN U. S. A.

